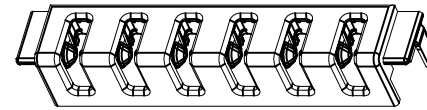
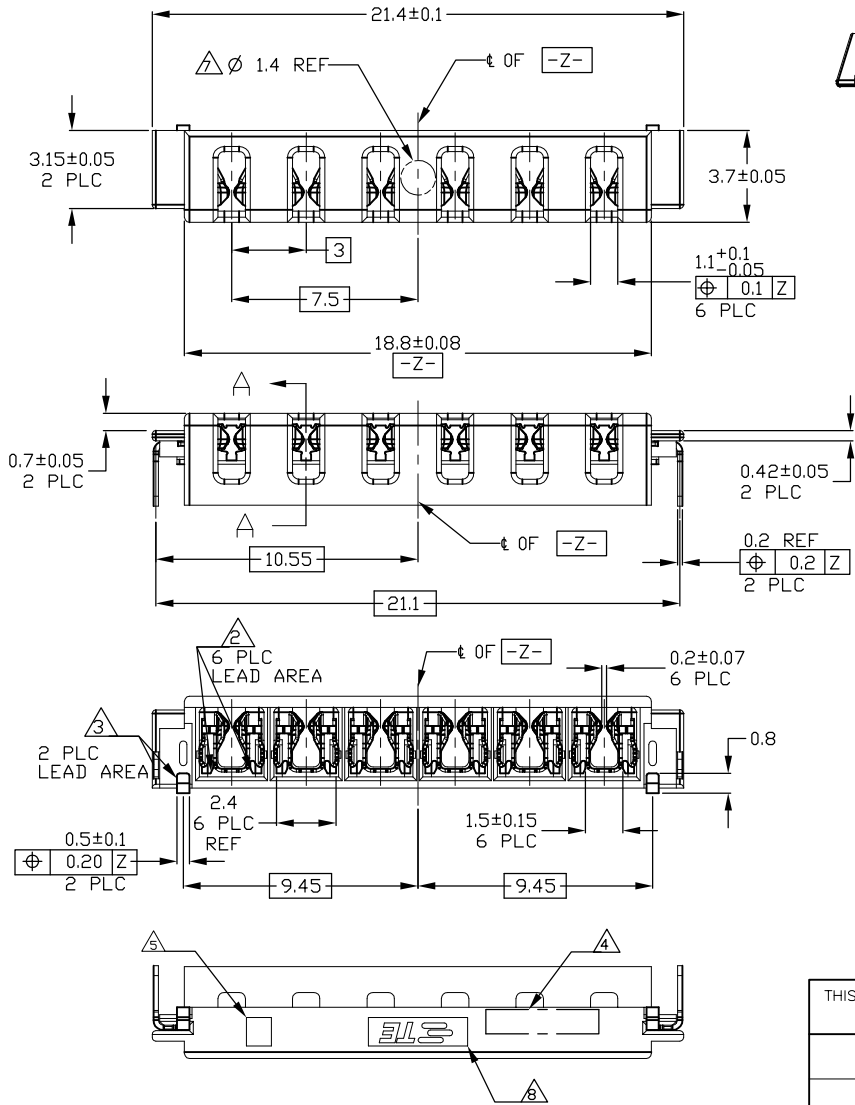
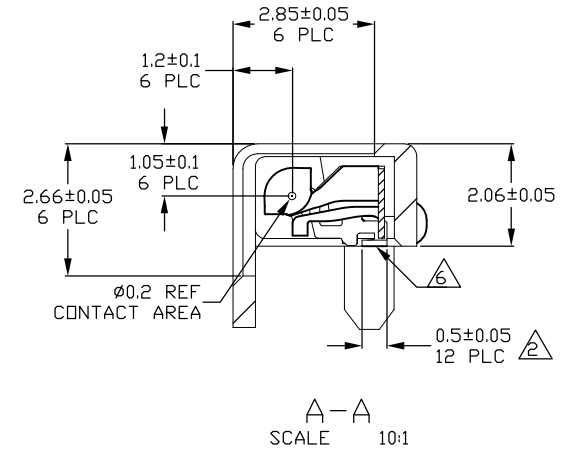
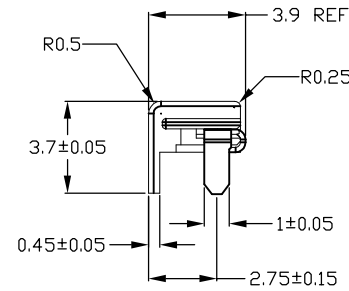


REVISIONS				
P	LTR	DESCRIPTION	DATE	DWN APVD
B		CORRECT MARK ERROR	16NOV2017	A.L. W.H



1932869-2:AS SHOWN



- △ MATERIAL  
CONTACT: COPPER ALLOY  
HOUSING: LCP UL94V-0, BLACK  
SOLDER PEG: BRASS
- △ FINISH  
CONTACT: NICKEL ALL OVER UNDER PLATING, 2.54um MIN.  
GOLD PLATING (REF ASTM B488, TYPE 2, GRADE C (130-200KnooP))  
1.27um MIN AT CONTACT AREA.  
GOLD FLASH PLATING AT LEAD AREA, 0.05-0.13um
- △ FINISH  
SOLDER PEG: NICKEL ALL OVER UNDER PLATING, OVER 2um  
TIN PLATING ALL OVER, 2-5um, LEAD FREE
- △ DATE CODE: 5 DIGITS.
- △ MOLD CAVITY ID.
- △ COPLANARITY: 0.08MAX.
- △ PICKING AREA
- △ TRADE MARK

△	△	1932869-2
FINISH		PART NUMBER

THIS DRAWING IS A CONTROLLED DOCUMENT.		DWN Tony.Zhang 6JULY2011	TE Connectivity	
DIMENSIONS: mm		CHK Yohei.Harada 6JULY2011		
TOLERANCES UNLESS OTHERWISE SPECIFIED:		APVD Steven.Yao 6JULY2011	NAME FBIS-II RECEPTACLE ASSEMBLY ASSEMBLY 6 POS	
0 PLC ±0.3 1 PLC ±0.3 2 PLC ±0.3 3 PLC ±- 4 PLC ±- ANGLES ±3°		PRODUCT SPEC 108-1691	RESTRICTED TO	
MATERIAL △ 1 -		WEIGHT -	SIZE A3	CAGE CODE 00779
FINISH △ 2 -		DRAWING NO C=1932869		REV B
CUSTOMER DRAWING			SCALE 5:1	SHEET 1 OF 3

THIS DRAWING IS UNPUBLISHED.

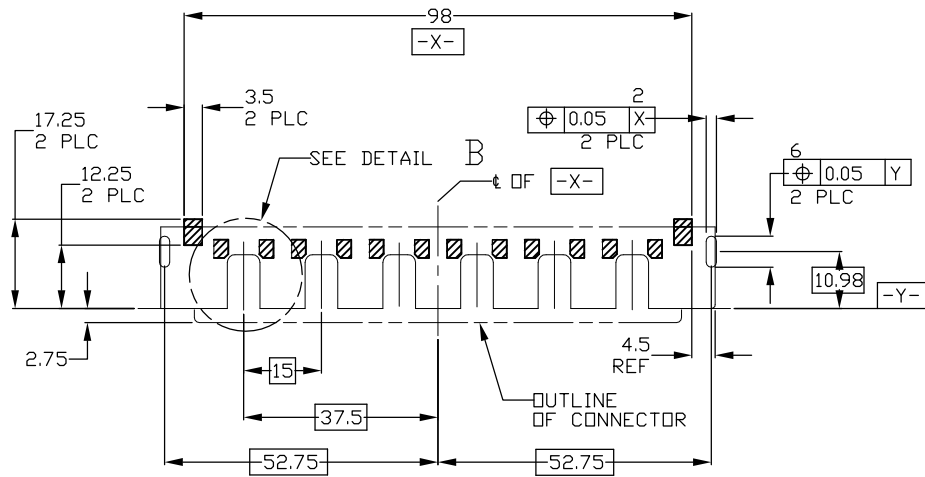
RELEASED FOR PUBLICATION

ALL RIGHTS RESERVED.

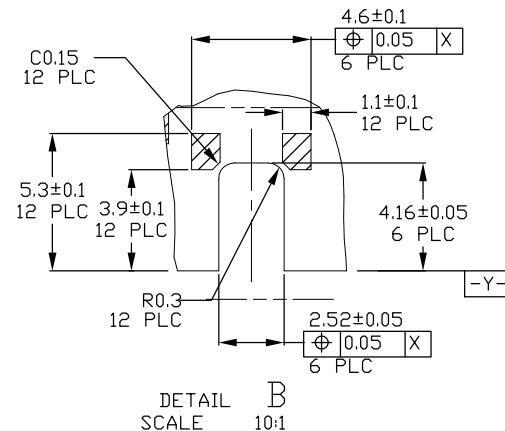
© COPYRIGHT - By -


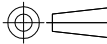
REVISIONS

P	LTR	DESCRIPTION	DATE	DWN	APVD
-	-	SEE SHEET 1	-	-	-



RECOMMENDED SMALL PCB LAYOUT  
(GENERAL TOLERANCE: ± 0.05, SCALE 5:1)



THIS DRAWING IS A CONTROLLED DOCUMENT.		DWN Tony Zhang 6 JULY 2011	 TE Connectivity	
		CHK Yohei Harada 6 JULY 2011		
		APVD Steven Yao 6 JULY 2011		
		PRODUCT SPEC 108-1691		
DIMENSIONS: mm		TOLERANCES UNLESS OTHERWISE SPECIFIED:		NAME FBIS-II RECEPTACLE ASSEMBLY 6 POS
		0 PLC ± 0.3 1 PLC ± 0.3 2 PLC ± 0.3 3 PLC ± - 4 PLC ± - ANGLES ± 3°		RESTRICTED TO
MATERIAL 1 -		FINISH 2 -		SIZE A3
				CAGE CODE 00779
				DRAWING NO C=1932869
				SCALE 1:1
				SHEET 2 OF 3
				REV B
CUSTOMER DRAWING				

4

3

2

1

THIS DRAWING IS UNPUBLISHED.

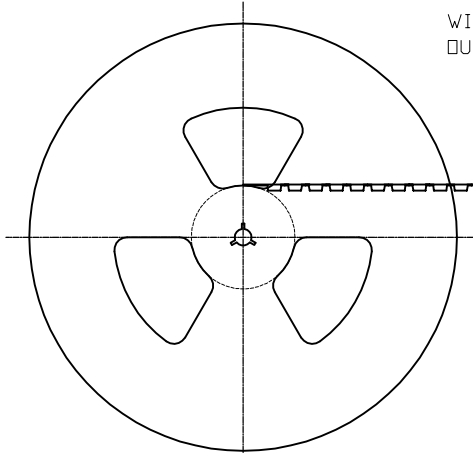
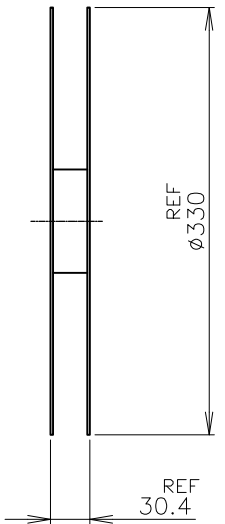
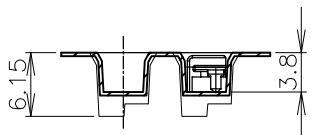
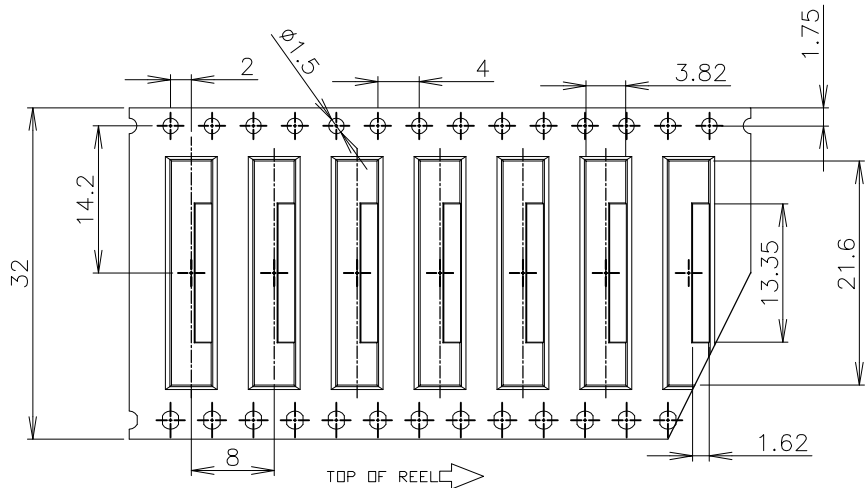
RELEASED FOR PUBLICATION

ALL RIGHTS RESERVED.

© COPYRIGHT - By -

REVISIONS

P	LTR	DESCRIPTION	DATE	DWN	APVD
-	-	SEE SHEET 1	-	-	-



WIDE COVER TAPE AROUND  
OUT PERIPHERY 1 TURN

TOP OF REEL

PEELING STRENGTH  
0.1-1.3N MAX(300±10mm/min)  
PEELING ANGLE  
165-180°

2000EA/REEL

WITHOUT CHARGE  
300mm APPROX

WITH PRODUCT CHARGE

WITHOUT CHARGE  
600mm APPROX

THIS DRAWING IS A CONTROLLED DOCUMENT.

DWN	6JULY2011
CHK	6JULY2011
APVD	6JULY2011



DIMENSIONS:	TOLERANCES UNLESS OTHERWISE SPECIFIED:
mm	
	0 PLC ± 0.1
	1 PLC ± 0.1
	2 PLC ± 0.1
	3 PLC ± -
	4 PLC ± -
	ANGLES ± 3'

NAME	STEVEN YAO
PRODUCT SPEC	108-1691
APPLICATION SPEC	-
WEIGHT	-

FBIS-II RECEPTACLE ASSEMBLY ASSEMBLY 6 POS			
SIZE	CAGE CODE	DRAWING NO	RESTRICTED TO
A3	00779	C=1932869	-

MATERIAL	FINISH	CUSTOMER DRAWING	SCALE	SHEET	REV
-	-		5:1	3 of 3	B