

## DETAILS

<b>Product Number</b>	FN15379_STELLA-VSM
<b>Family</b>	STELLA
<b>Type</b>	Pack
<b>Color</b>	clear
<b>Diameter</b>	90 mm
<b>Height</b>	20,7 mm
<b>Style</b>	round
<b>Optic Material</b>	Silicone
<b>Holder Material</b>	
<b>Fastening</b>	
<b>Status</b>	production ready
<b>ROHS Compliant</b>	Yes
<b>Date Updated</b>	2/02/2017

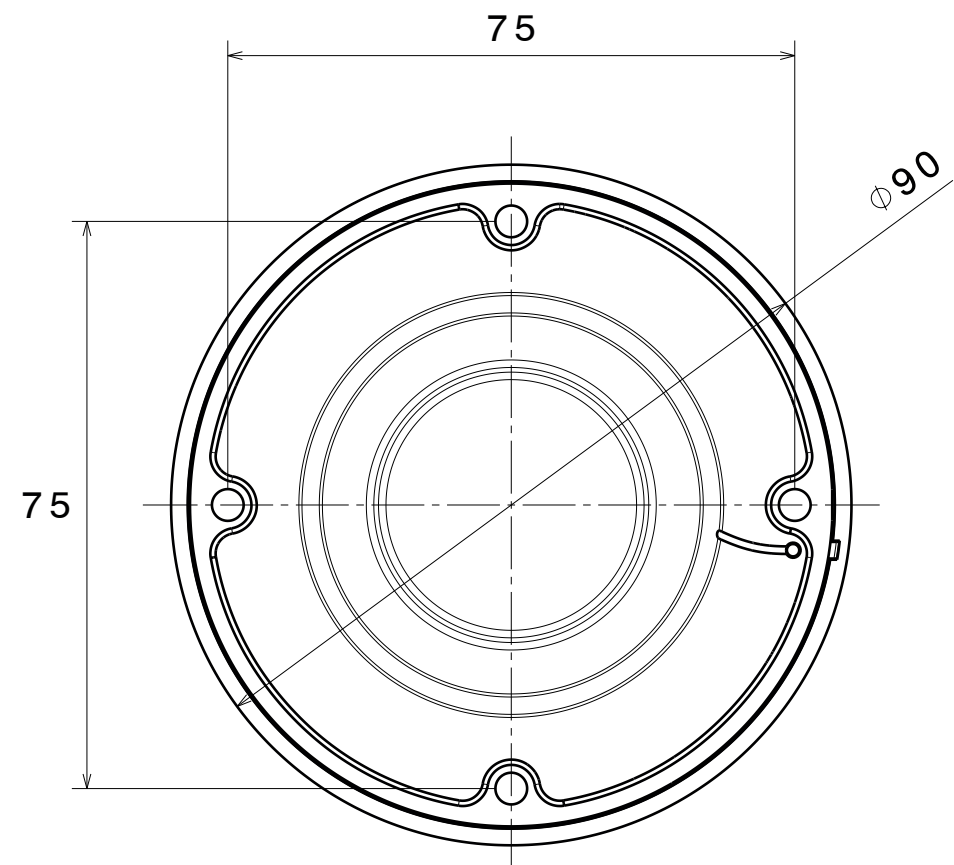


## OPTICAL PROPERTIES

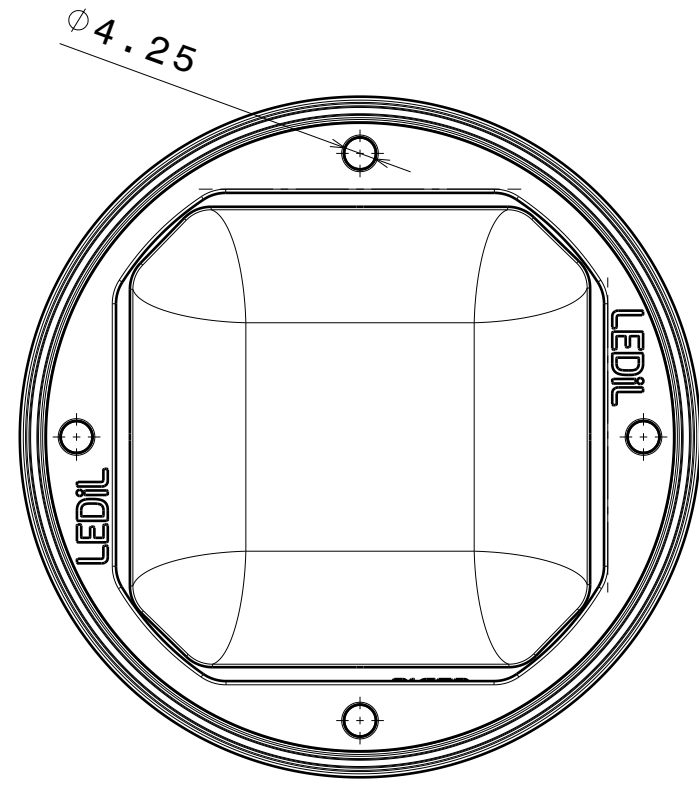
LED	Viewing Angle	Light Beam	Efficiency	cd/lm	Connector
VERO18	Asymmetric deg	Wide-Area...	94 %	0.400	-
Vero SE 29	Asymmetric deg	Wide-Area...	94 %	0.260	-
Vero SE 13	Asymmetric deg	Wide-Area...	90 %	0.620	-
Vero SE 18	Asymmetric deg	Wide-Area...	94 %	0.370	-
V10 Gen7	sim: Asymmetric	Wide-Area...	sim: 93 %	sim: 0.510	Bender Wirth: 434 Typ Z1
V22 Gen7	sim: asym	Wide-Area...	sim: 94 %	sim: 0.329	Bender Wirth: 431 Typ Z1
V18 Gen7	sim: Asymmetric	Wide-Area...	sim: 93 %	sim: 0.350	-
V13 Gen7	sim: Asymmetric	Wide-Area...	sim: 97 %	sim: 0.380	Bender Wirth: 477 Typ Z1
V13 Gen7	sim: Asymmetric	Wide-Area...	sim: 98 %	sim: 0.400	-
CLL04x/CLU04x	sim: Asym	Wide-Area...	sim: 93 %	sim: 0.320	-
CLL05x/CLU05x	Asymmetric deg	Wide-Area...	94 %	0.260	-
CLL04x/CLU04x	sim: Asym	Wide-Area...	sim: 94 %	sim: 0.330	Bender Wirth: 431 Typ Z1
CXA/B 30xx	sim: Asymmetric	Wide-Area...	sim: 94 %	sim: 0.300	Bender Wirth: 447 Typ Z1
CXA/B 25xx	sim: Asym	Wide-Area...	sim: 94 %	sim: 0.350	-
LUXEON CoB 1208	Asymmetric deg	Wide-Area...	94 %	0.540	-
LUXEON CoB 1216	sim: Asym	Wide-Area...	sim: 92 %	sim: 0.270	-
CXM-22	sim: Asym	Wide-Area...	sim: 94 %	sim: 0.300	Bender Wirth: 431 Typ Z1
MJT COB LES 33	Asymmetric deg	Wide-Area...	94 %	0.230	-
MJT COB LES 22	Asymmetric deg	Wide-Area...	94 %	0.310	Bender Wirth: 431 Typ Z1
MJT COB LES 14.5	asym deg	Wide-Area...	94 %	0.500	Bender Wirth: 433 Typ Z1

H G F E D C B A

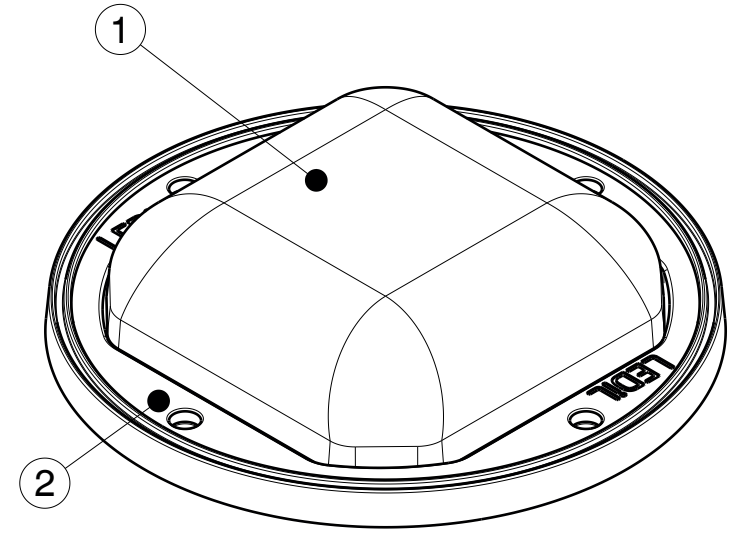
NOTE: Maximum recommended tightening torque for STELLA-FRAME is 0,4Nm



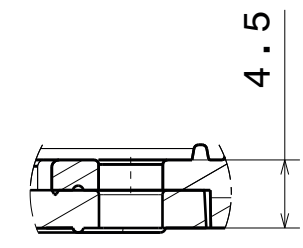
Bottom view



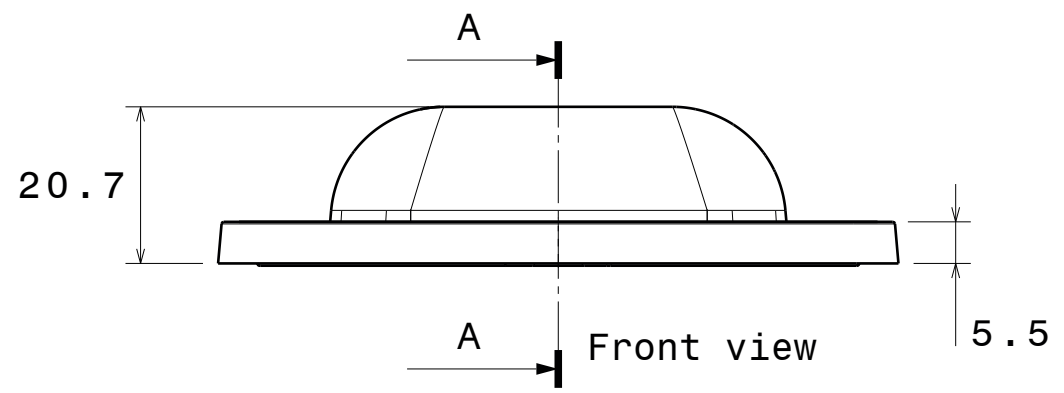
Top view



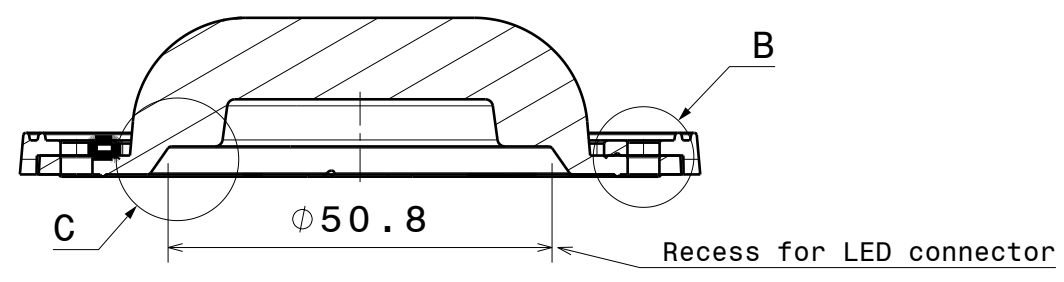
Isometric view



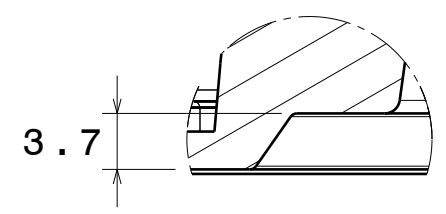
Detail B



Front view



Section view A-A



Detail C

INDEX	PART NO	DESCRIPTION	MATERIAL	COLOUR
1	F15175	STELLA-VSM	Optical grade LSR	
2	F13322	STELLA-FRAME	PA66GF30	black

Tolerances if not otherwise shown  
 According to DIN ISO 2768-1  
 Linear measures:  
 Up to 30mm class M, otherwise class C.  
 According to DIN ISO 2768-2  
 Form and position: class L

**LEDiL** LediL Oy  
 Salorankatu 10  
 FIN 24240 SALO  
 Finland

THIRD ANGLE PROJECTION:

DRAWING TITLE  
**FN15379\_STELLA-VSM**

This drawing is the property of LEDiL Oy. It may not be reproduced, copied or communicated without a written agreement with LEDiL Oy.

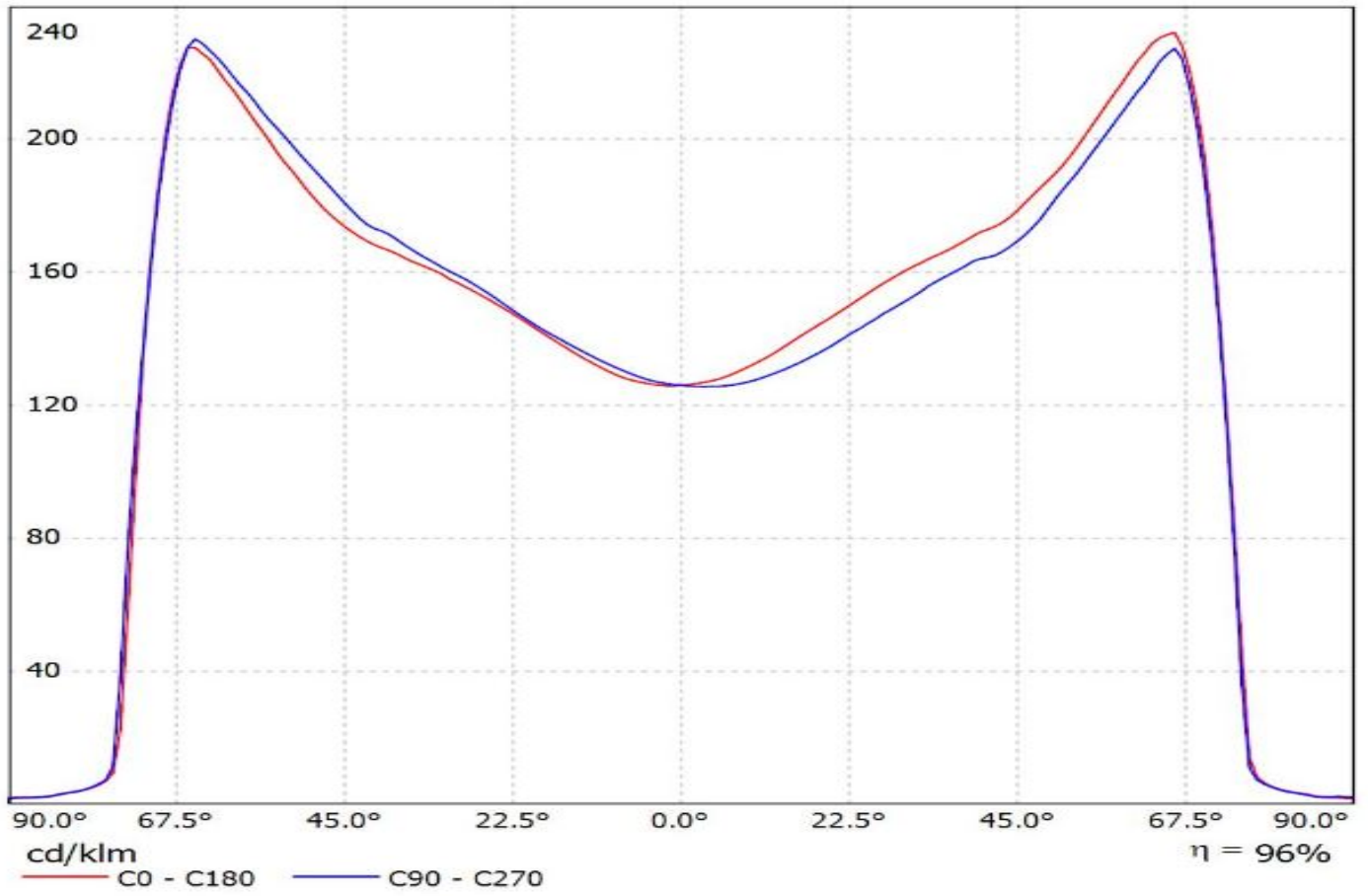
SIZE PART NUMBER  
**A3 FN15379**

SCALE 1:1 WEIGHT 58,3 g SHEET 1/1

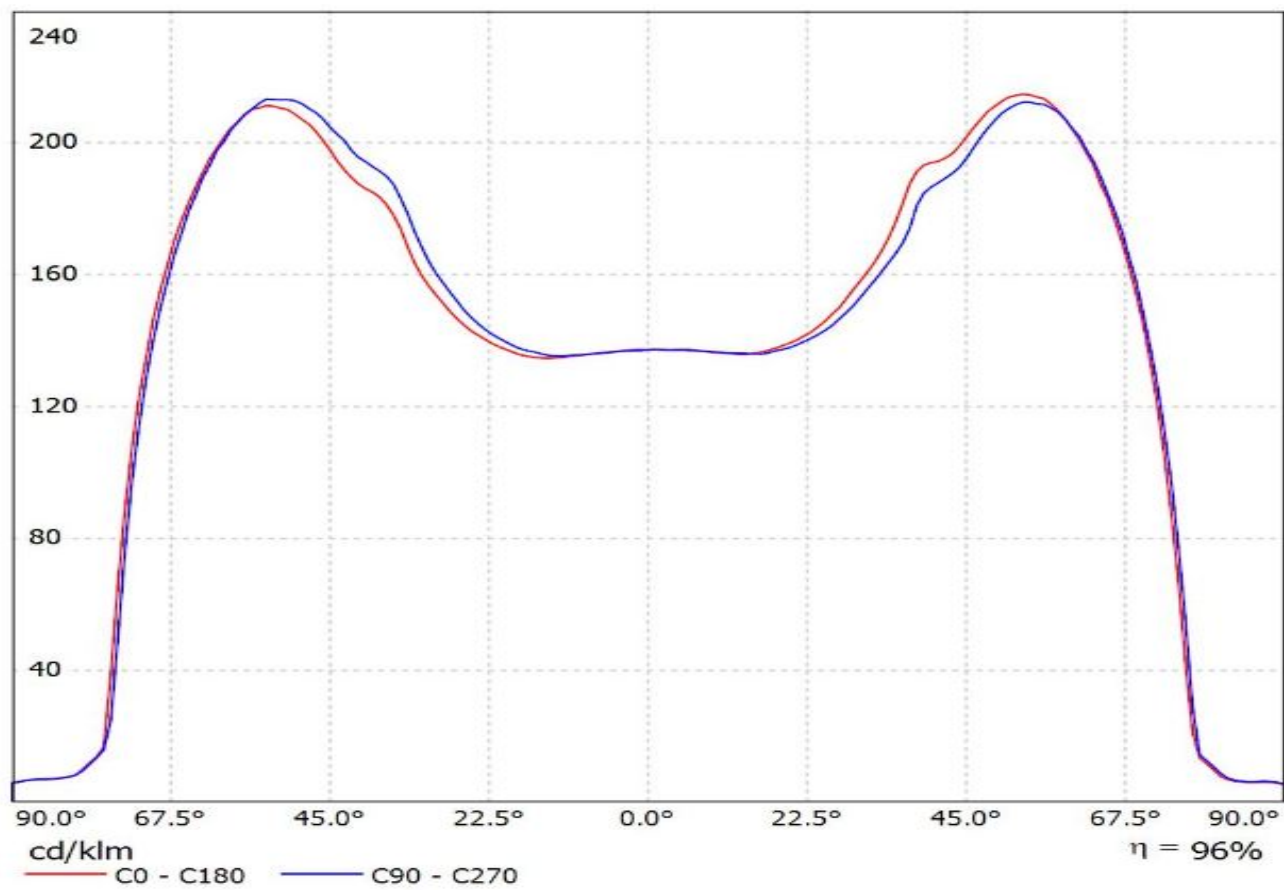
H G B A

Luminaire: Ledil FN15379\_STELLA-VSM\_(VERO18)

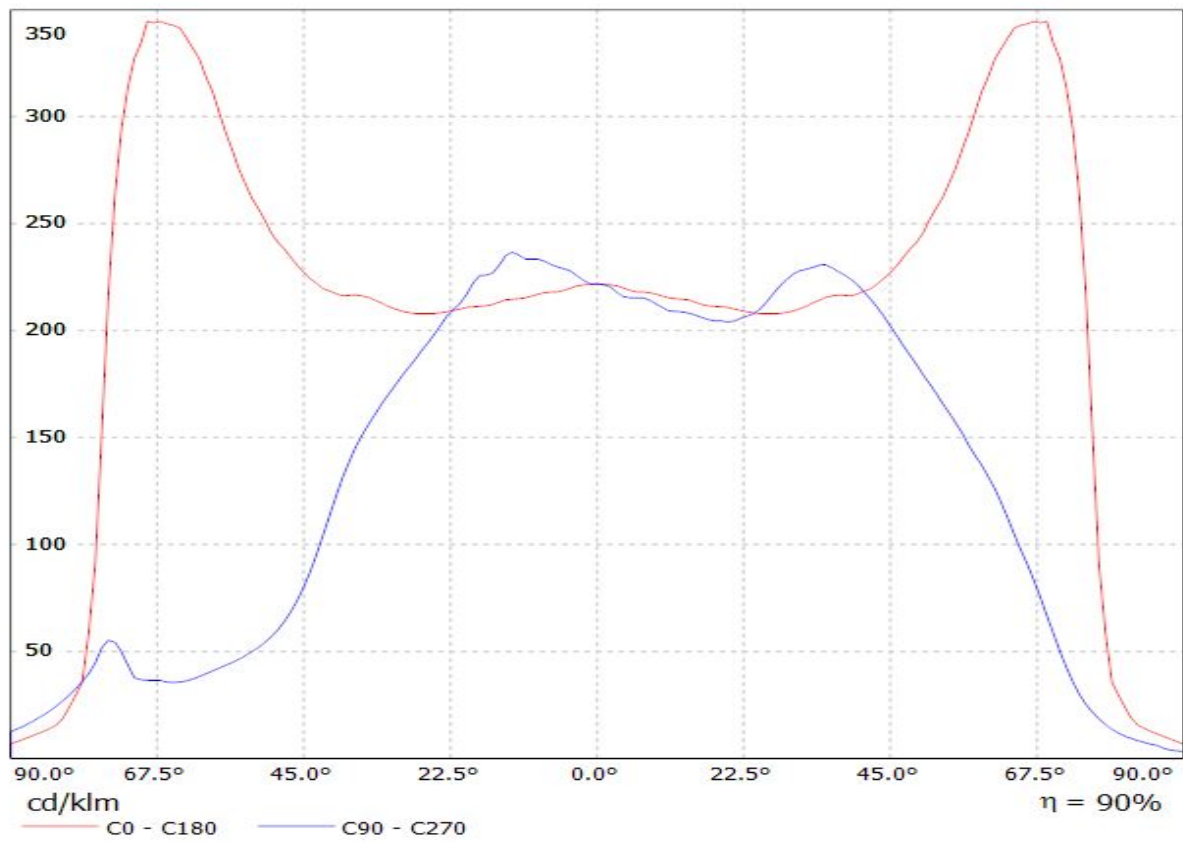
Lamps: 1 x Bridgelux\_Vero18\_(BXRE-30E4000-F-23)\_1040.57lm@250mA\_P=6.7955W\_I=0.250A



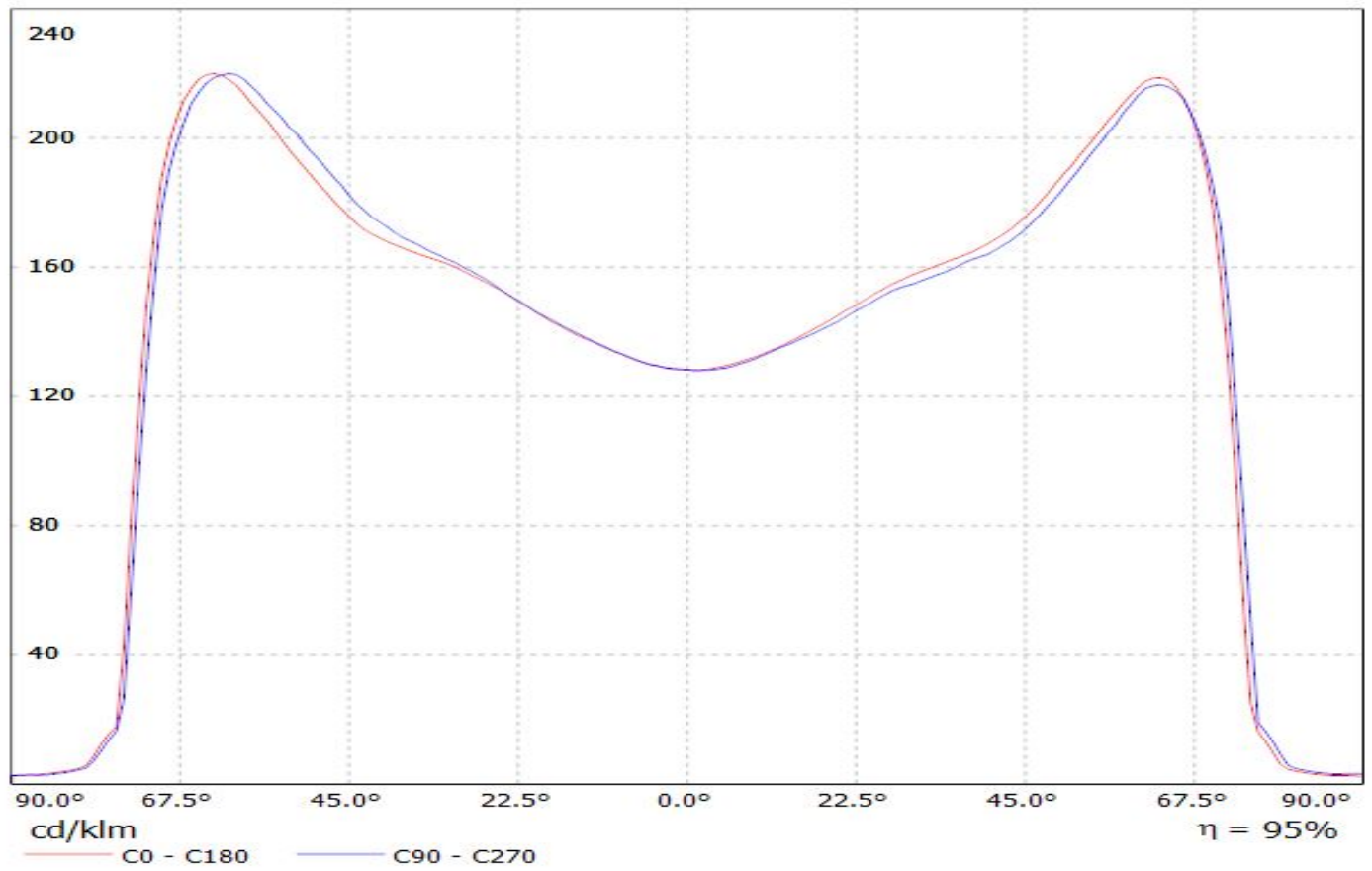
Luminaire: Ledil FN15379\_STELLA-VSM\_(Vero29\_SE\_Gen7)  
Lamps: 1 x Vero29\_SE\_Gen7\_1759.38lm@250mA\_P=8.58975\_I=0.25A

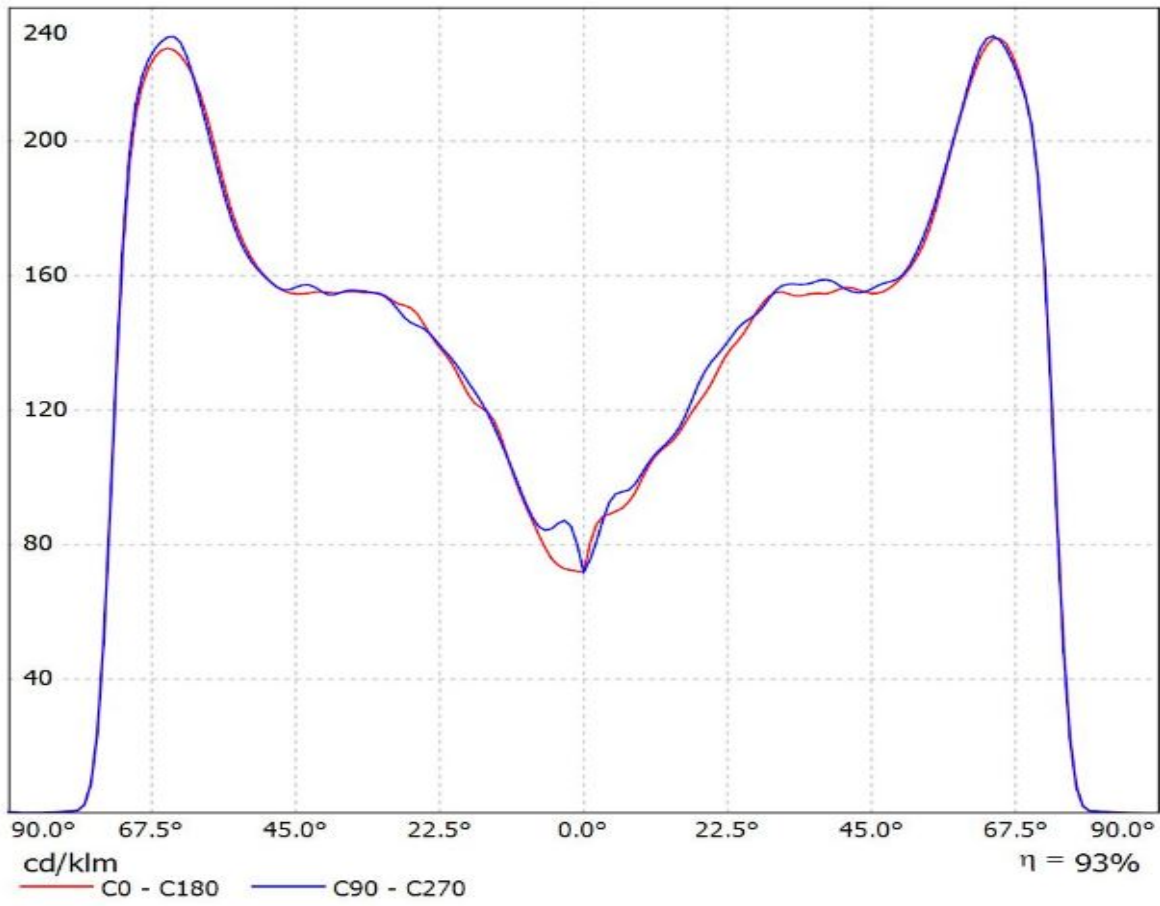


Luminaire: LEDiL Oy FN14976\_STELLA-DWC2\_(Vero\_13\_SE)  
Lamps: 1 x Bridgelux\_Vero\_13\_SE\_(BXRC-30E2000-C-73-SE)\_1028.9lm@250mA\_CCT=3000K\_P=8.23391W\_I=0.25A



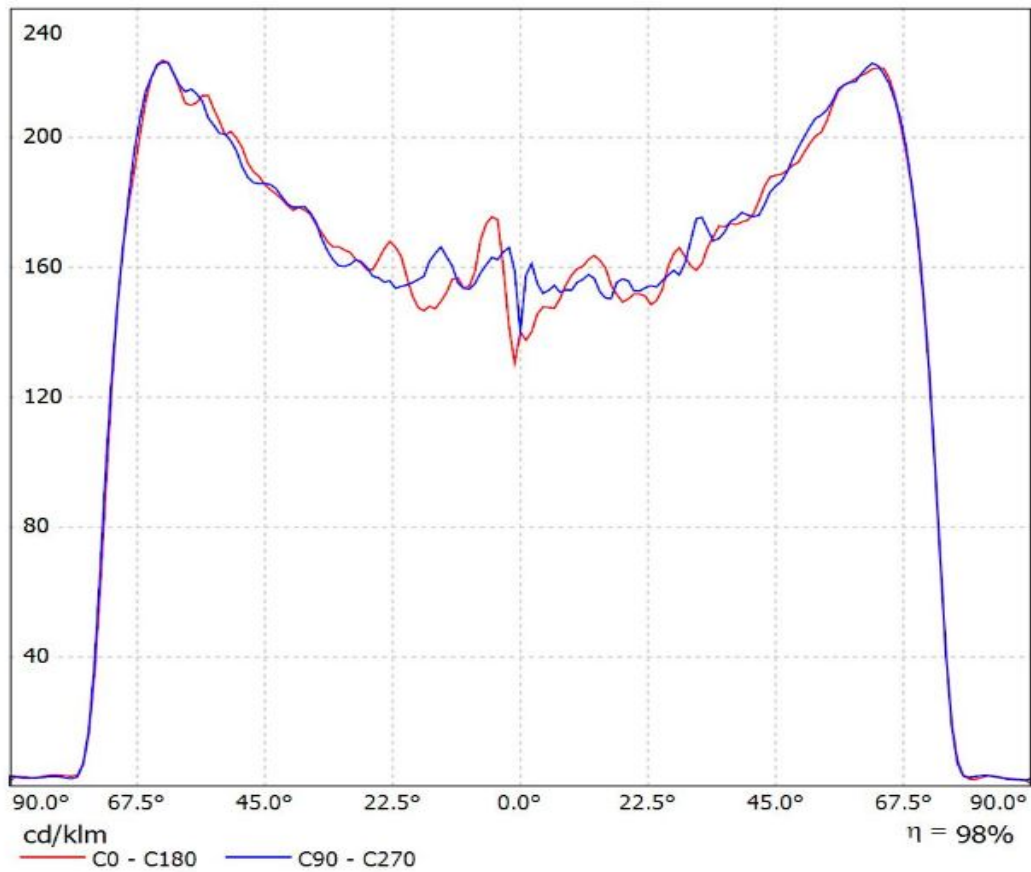
Luminaire: LEDiL Oy FN15379\_STELLA-VSM\_(VERO18\_SE)  
Lamps: 1 x Bridgelux\_VERO18\_SE\_(BXRC-30E4000-C-73-SE)  
\_1335.46lm@250mA\_P=7.9961W\_I=0.25A





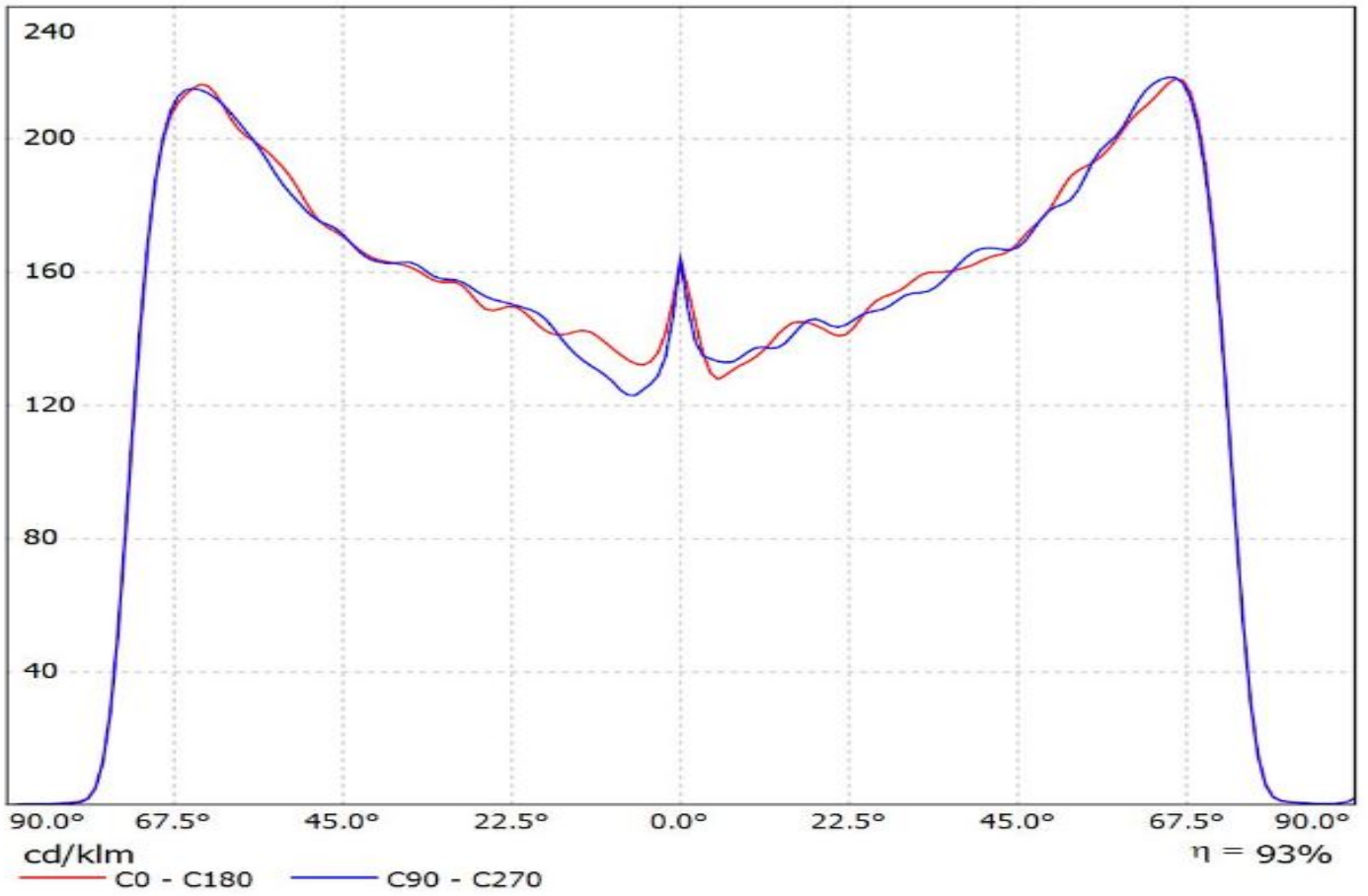


Luminaire: Ledil Oy FN15379\_STELLA-VSM\_Bridgelux\_V22\_Gen7\_SIMULATED FN15379\_STELLA-VSM\_Bridgelux\_V22\_Gen7\_SIMULATED  
Lamps: 1 x FN15379\_STELLA-VSM\_Bridgelux\_V22\_Gen7\_SIMULATED

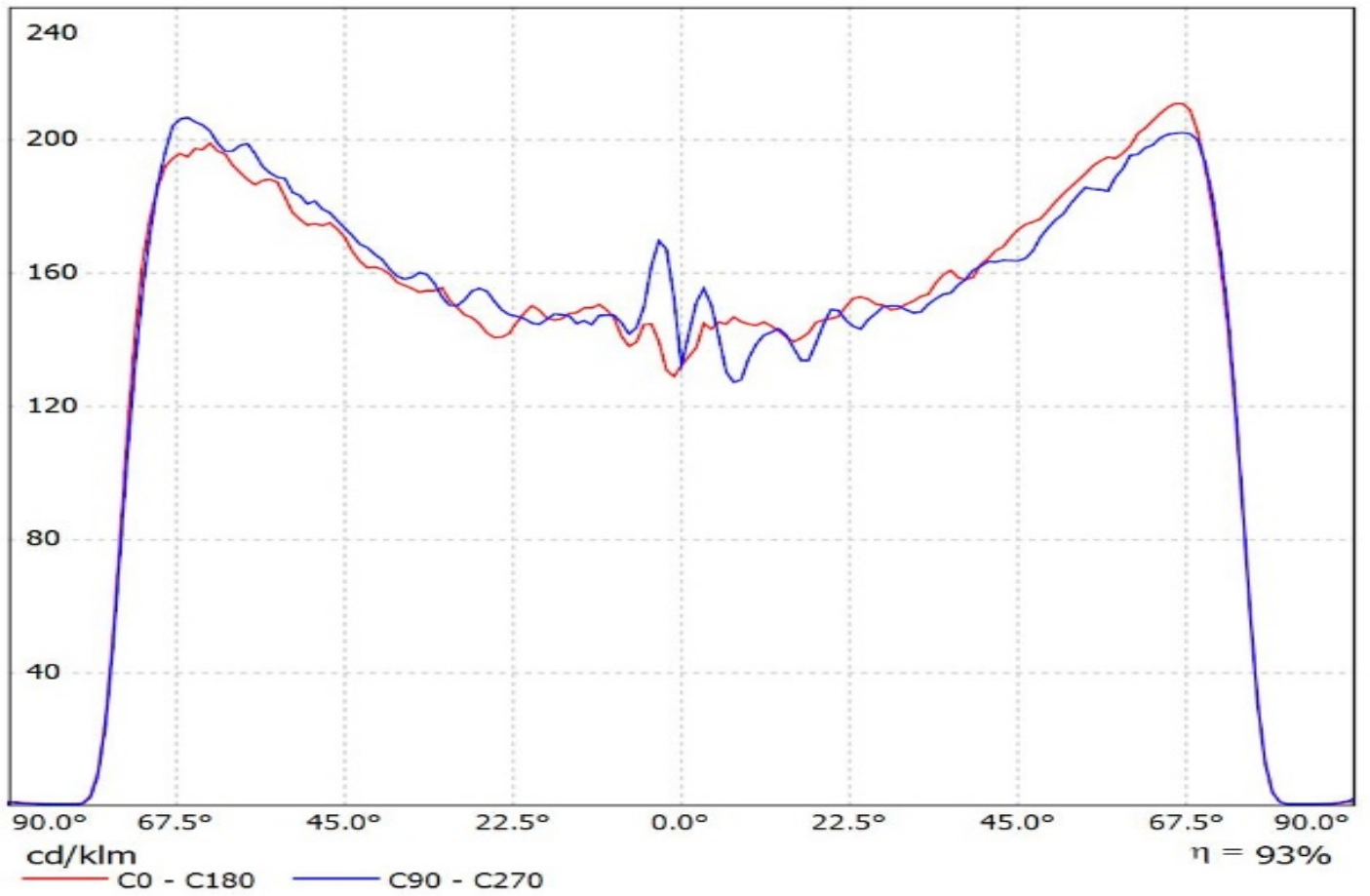




Luminaire: Ledil Oy FN15379\_STELLA-VSM\_BRIDGELUX\_V18\_Gen7\_SIMULATED  
Lamps: 1 x BRIDGELUX V18 Gen7

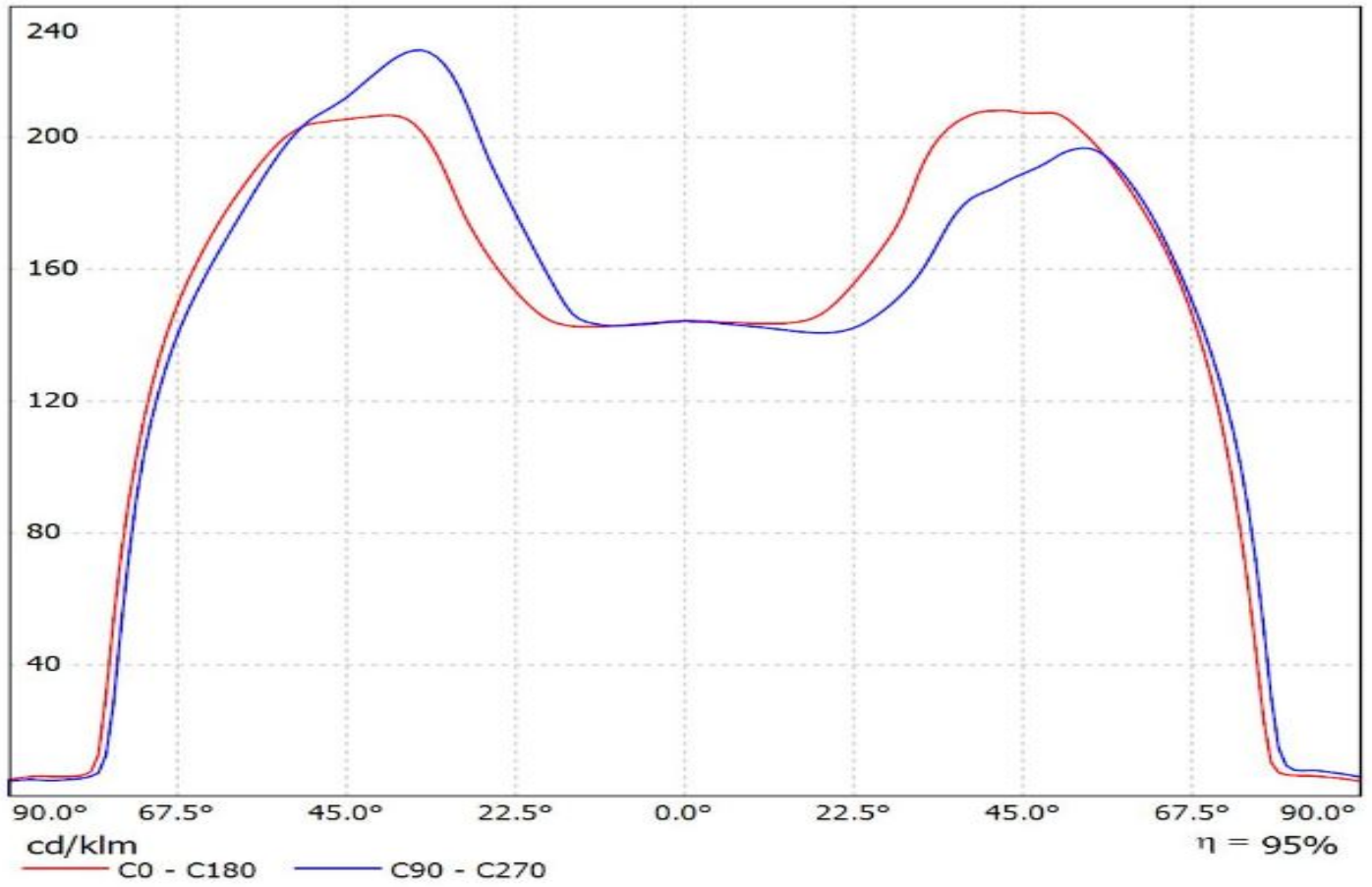


Luminaire: Ledil Oy FN15379\_STELLA-VSM\_simulated\_CLU044  
Lamps: 1 x Citizen CLU044

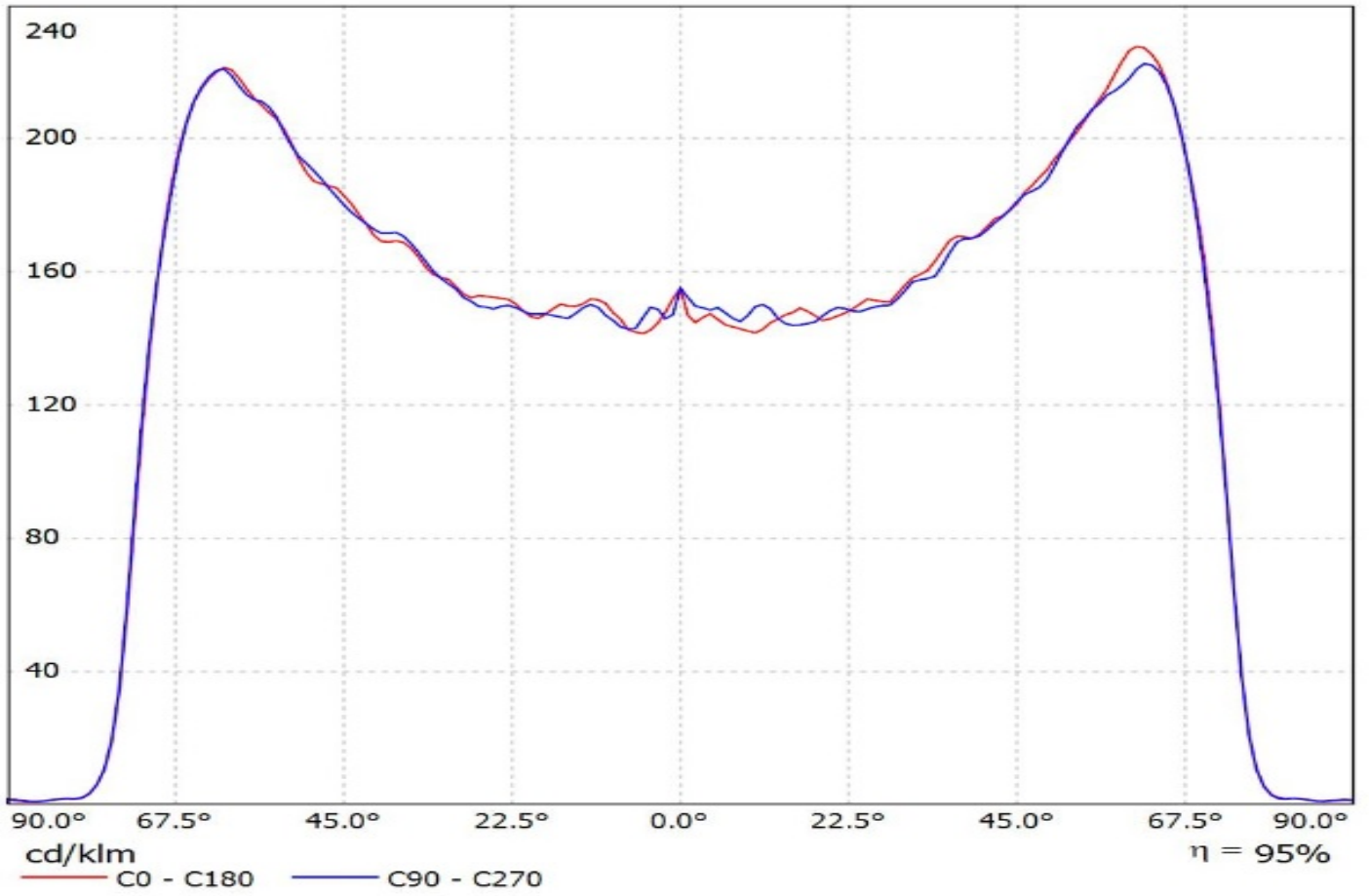


Luminaire: Ledil FN15379\_STELLA-VSM\_(CLU054)

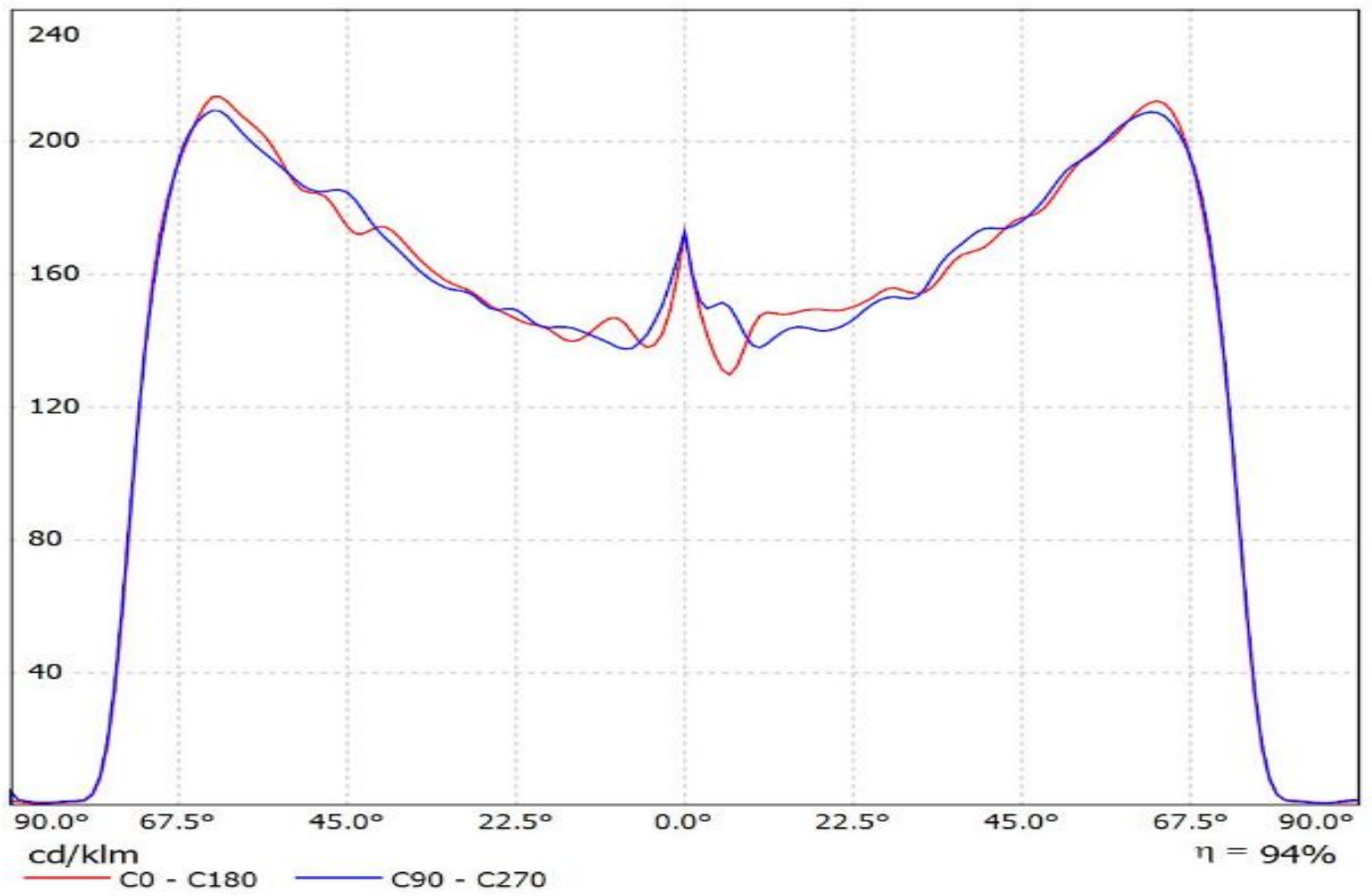
Lamps: 1 x Citizen\_CLU054\_(CLU054-1825B8-503MIA2)\_1939.14lm@250mA\_P=11.752W\_η=0.25A



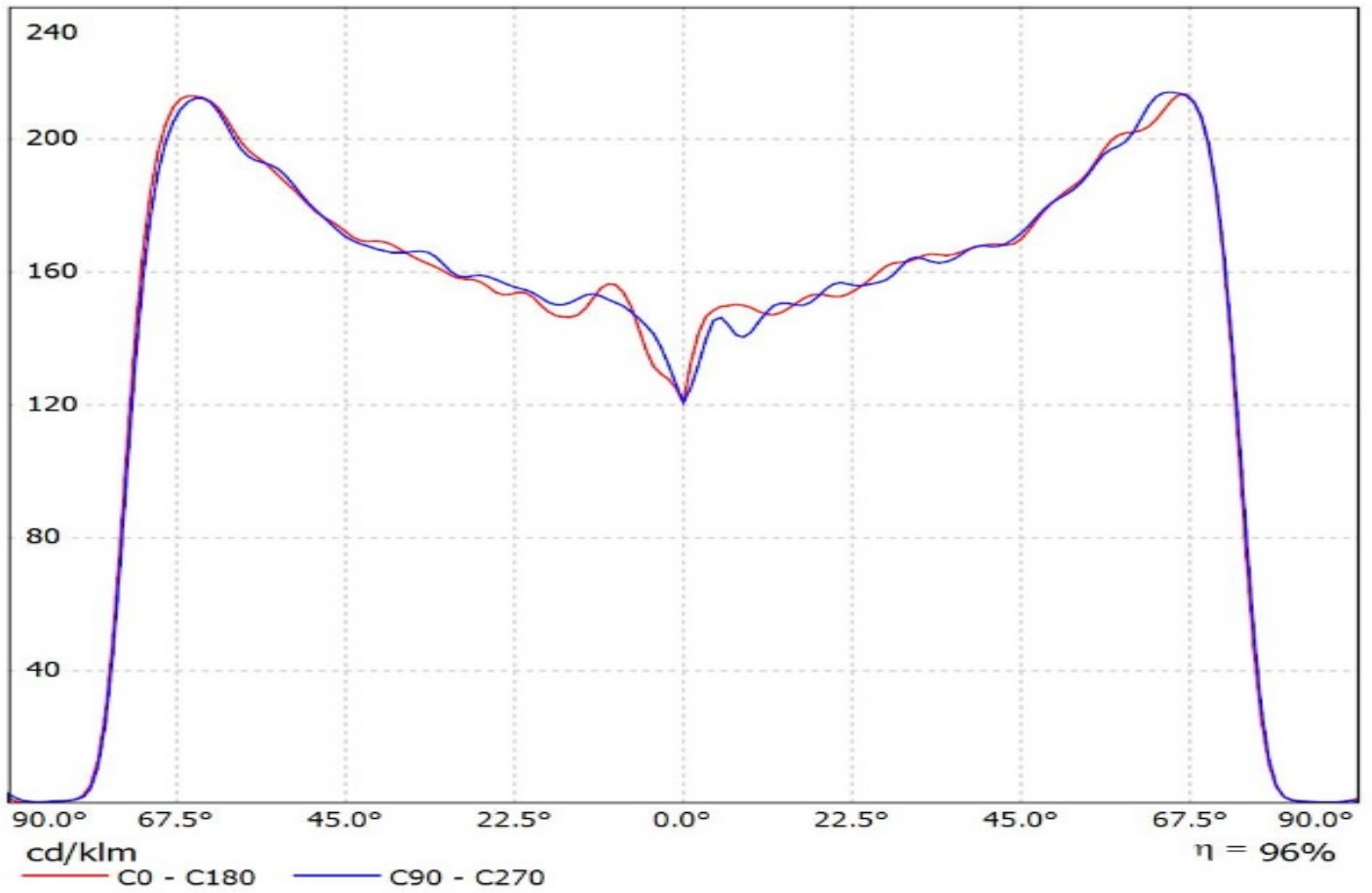
Luminaire: Ledil Oy FN15379\_STELLA-VSM\_(CLU048)\_(B&W\_431\_Type\_Z1)\_SIMULATED  
Lamps: 1 x Citizen CLU048 + Bender & Wirth 431 Type Z1



Luminaire: Ledil Oy FN15379\_STELLA-VSM+\_Bender+Wirth 447 Typ Z1\_CREE\_CXB3070\_SIMULATED  
Lamps: 1 x CREE CXB3070

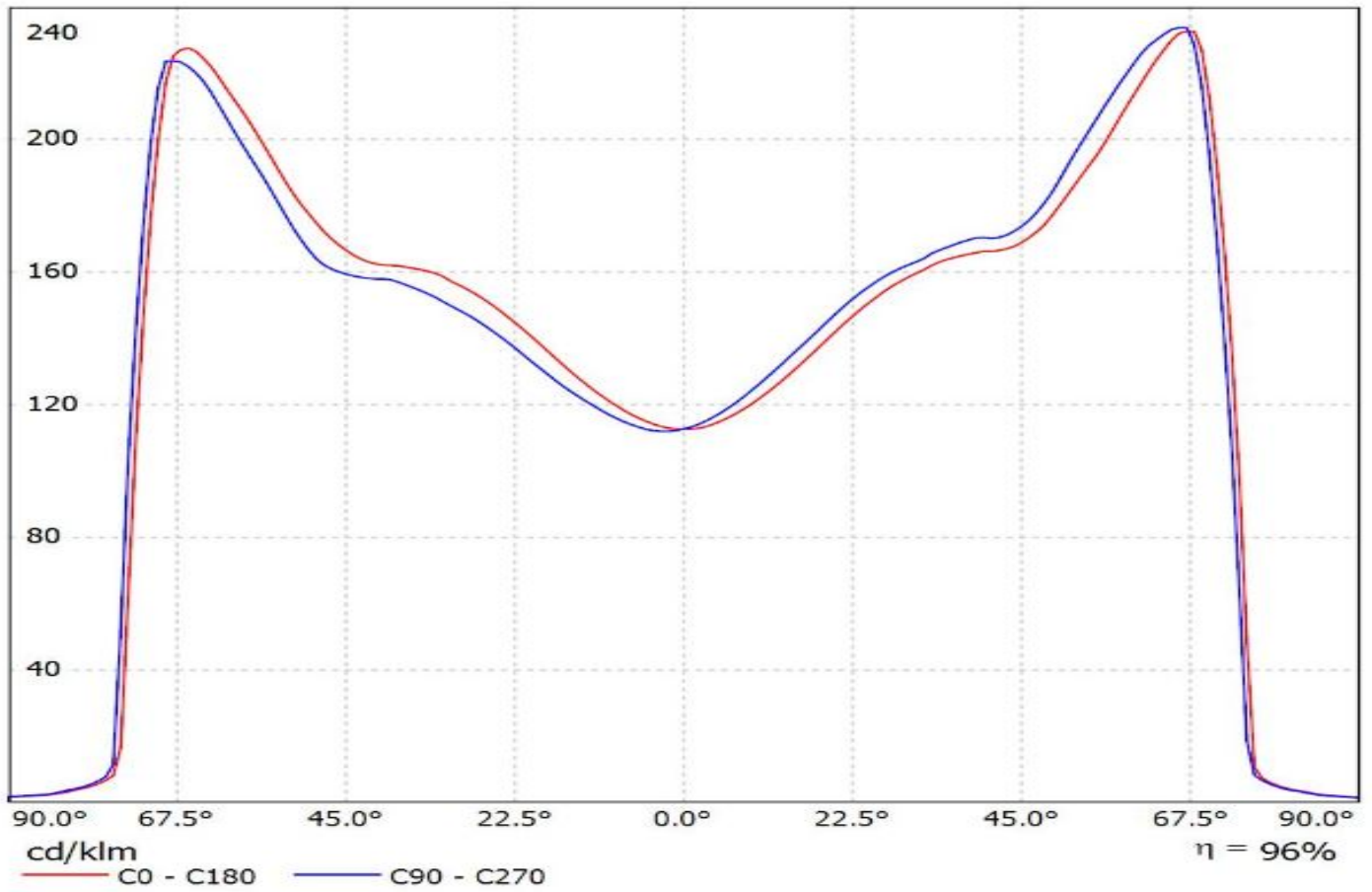


Luminaire: Ledil Oy FN15379\_STELLA-VSM\_(CXB2540)\_SIMULATED  
Lamps: 1 x Cree CXB 2540



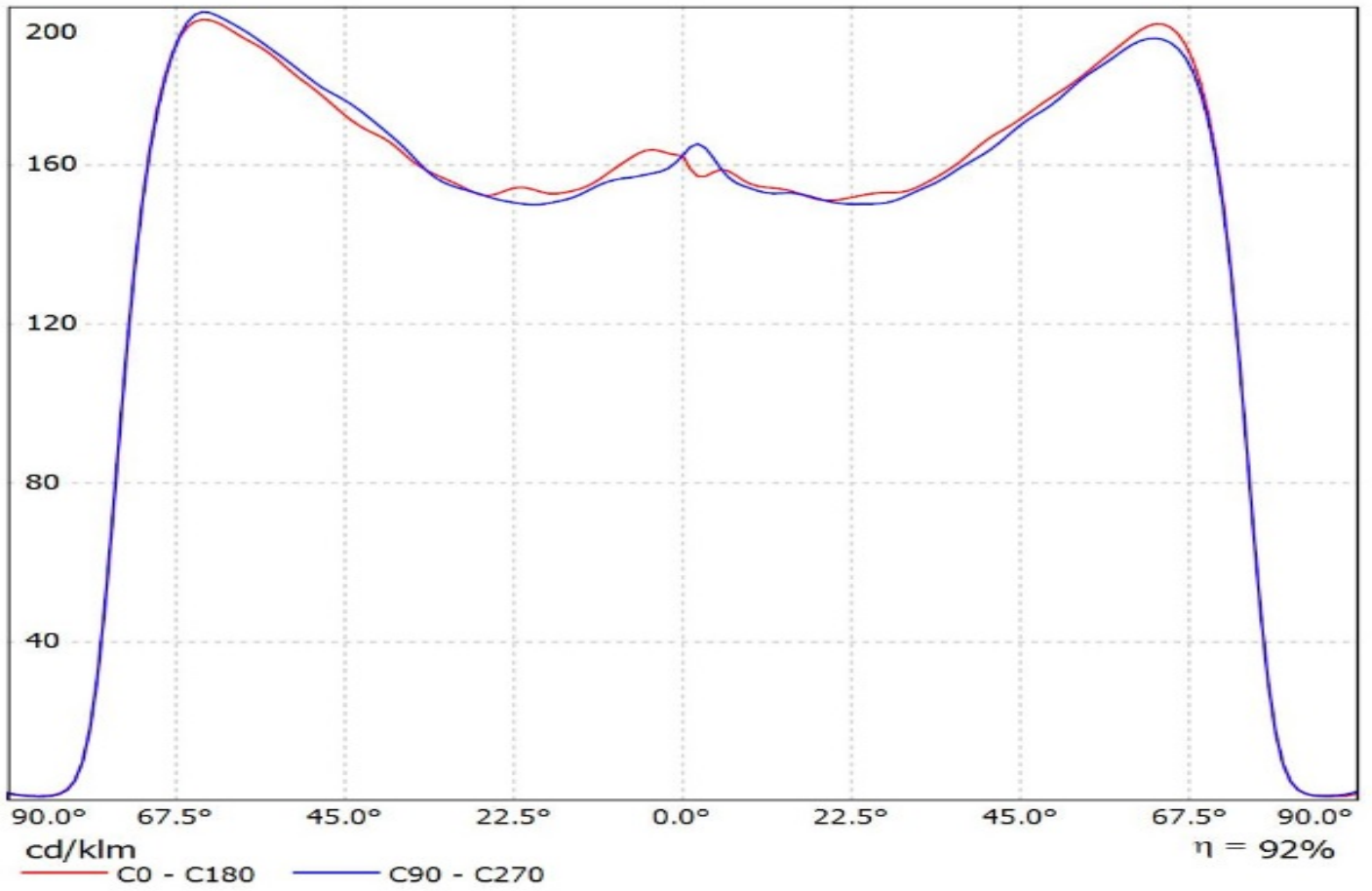
Luminaire: Ledil FN15379\_STELLA-VSM\_(Luxeon\_1208)

Lamps: 1 x Lumileds\_Luxeon\_1208\_(LHC1-3080-1208)\_1076.07lm250mA\_P=8.2273W\_I=0.250A

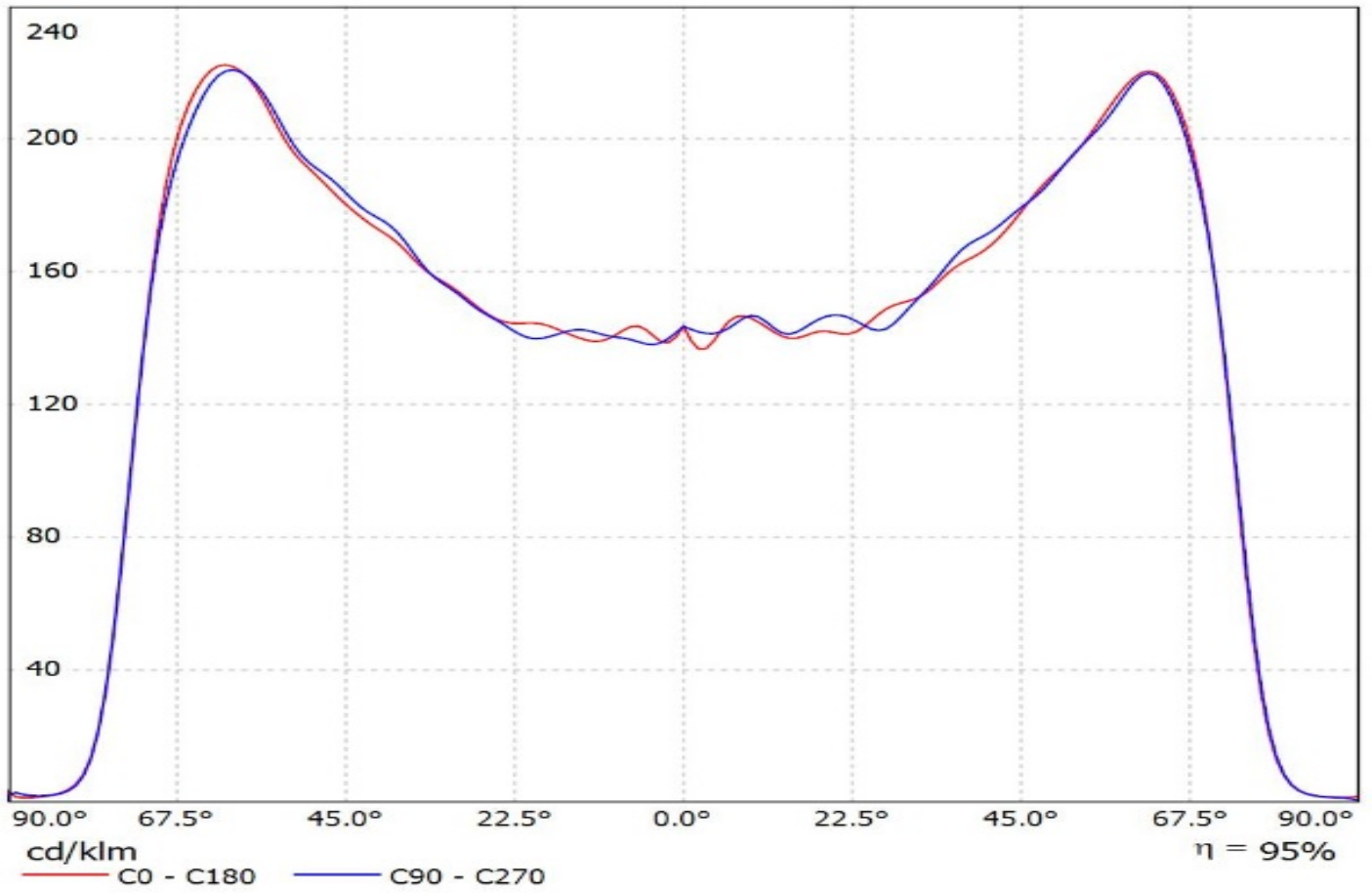




Luminaire: Ledil Oy FN15379\_STELLA-VSM\_(Luxeon\_CoB\_1216)\_(431\_Typ\_Z1)\_SIMULATED  
Lamps: 1 x Lumileds Luxeon CoB 1216 + Bender & Wirth 431 Type Z1

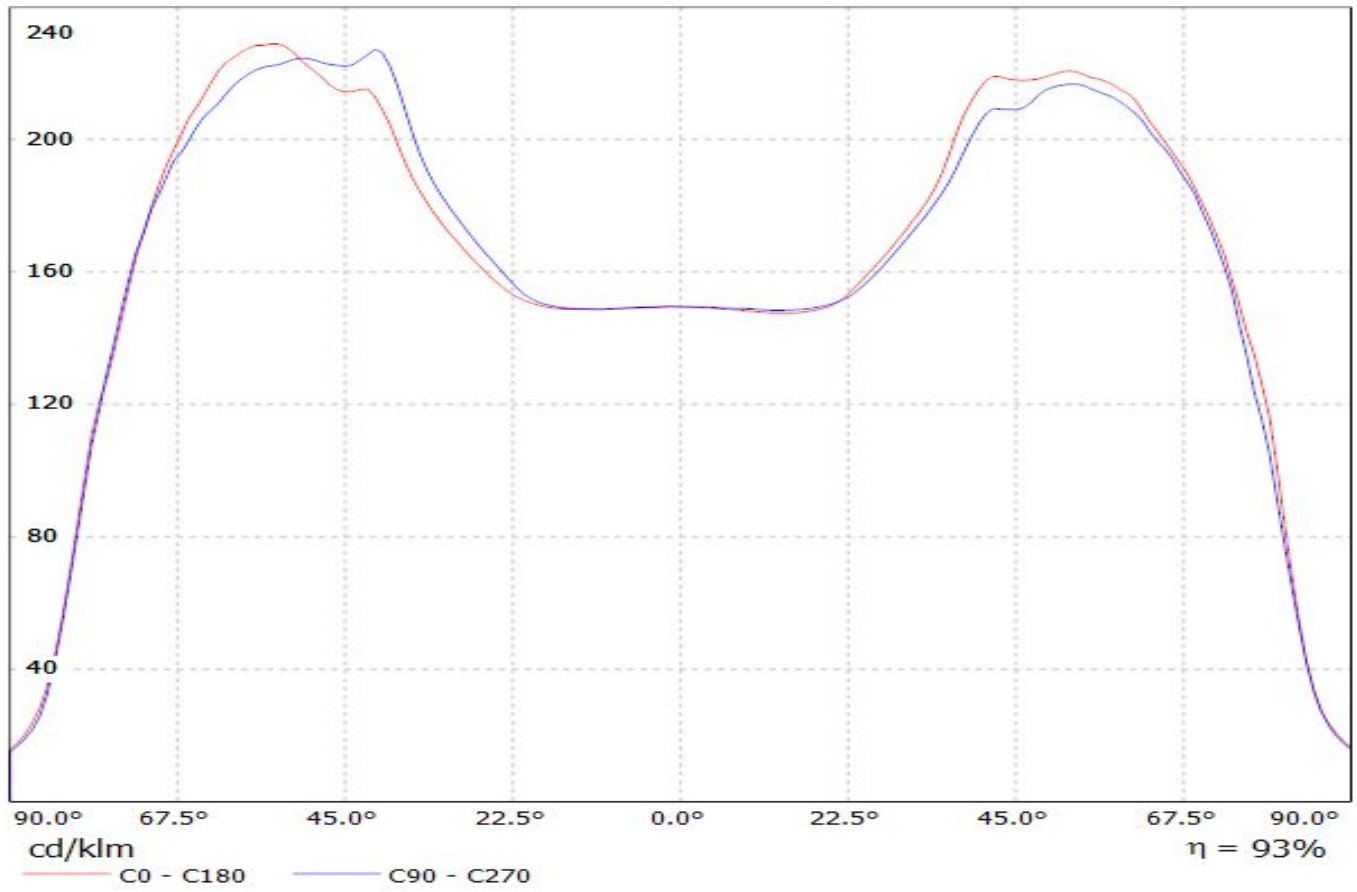


Luminaire: Ledil Oy FN15379\_STELLA-VSM\_(CXM-22)\_(B&W\_431\_Type\_Z1)\_SIMULATED  
Lamps: 1 x Luminus CXM-22 + Bender & Wirth 431 Type Z1



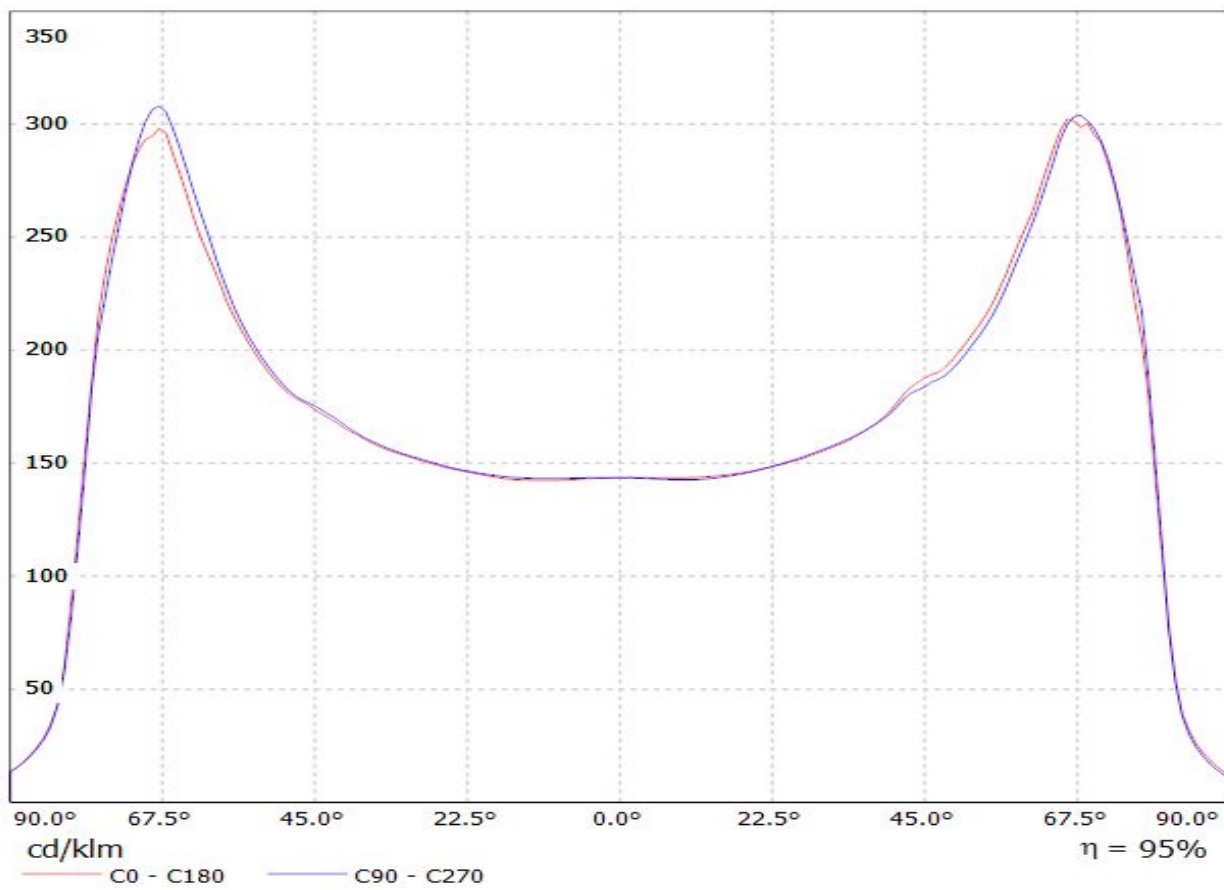
Luminaire: Ledil FN15379\_STELLA-VSM\_(MJT\_180W\_Les32,8)

Lamps: 1 x Seoul\_MJT\_180W\_Les33,8mm\_(SAWx33GCA)\_3860.39lm@250mA\_P=21.1143W\_I=0.25A



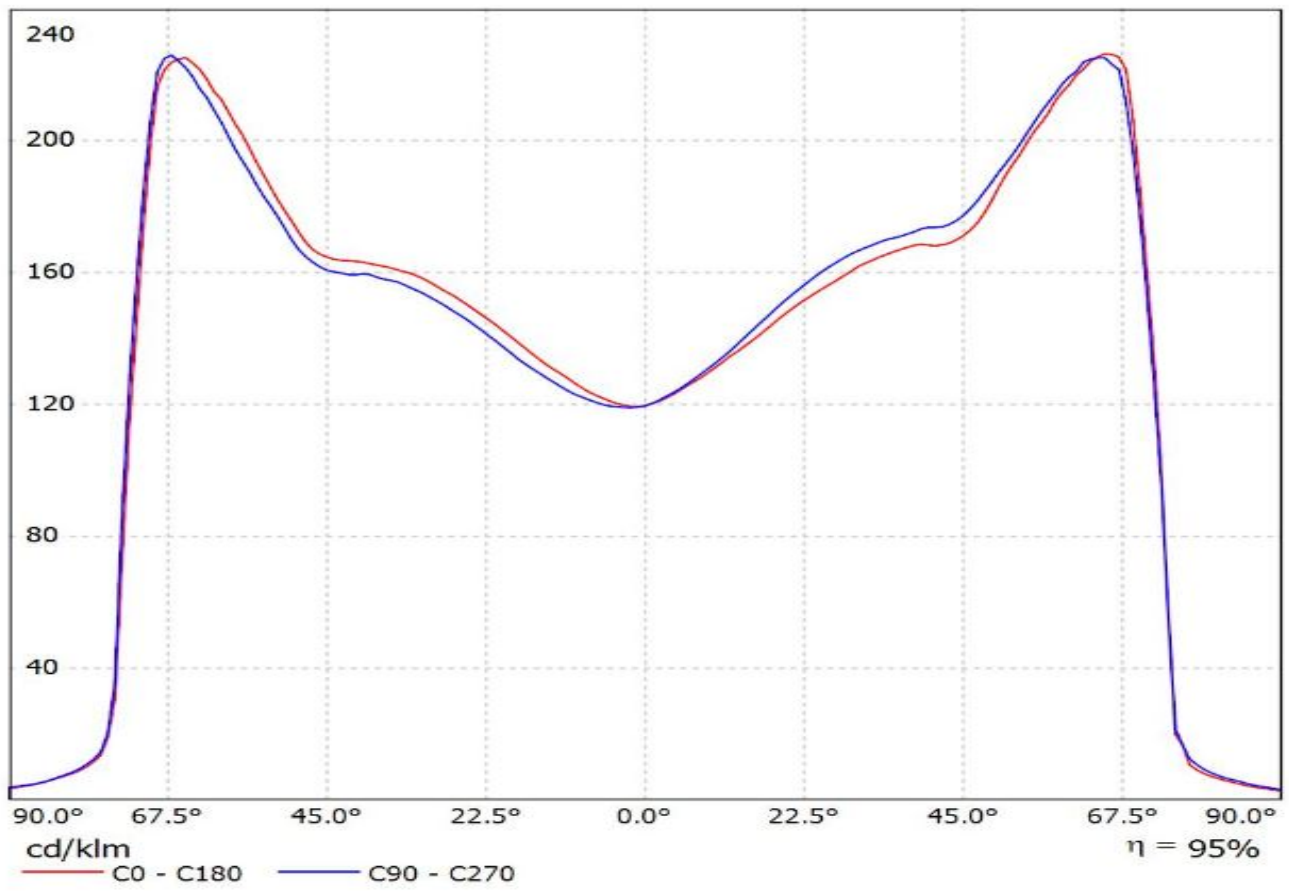
Luminaire: Ledil FN15379\_STELLA-VSM\_(MJT\_80W\_Les22)\_+431TypZ1

Lamps: 1 x Seoul\_MJT\_80W\_Les22mm\_(SAWx22AAA)\_+431TypZ1\_2508.93lm@250mA\_P=13.323W\_I=0.25A



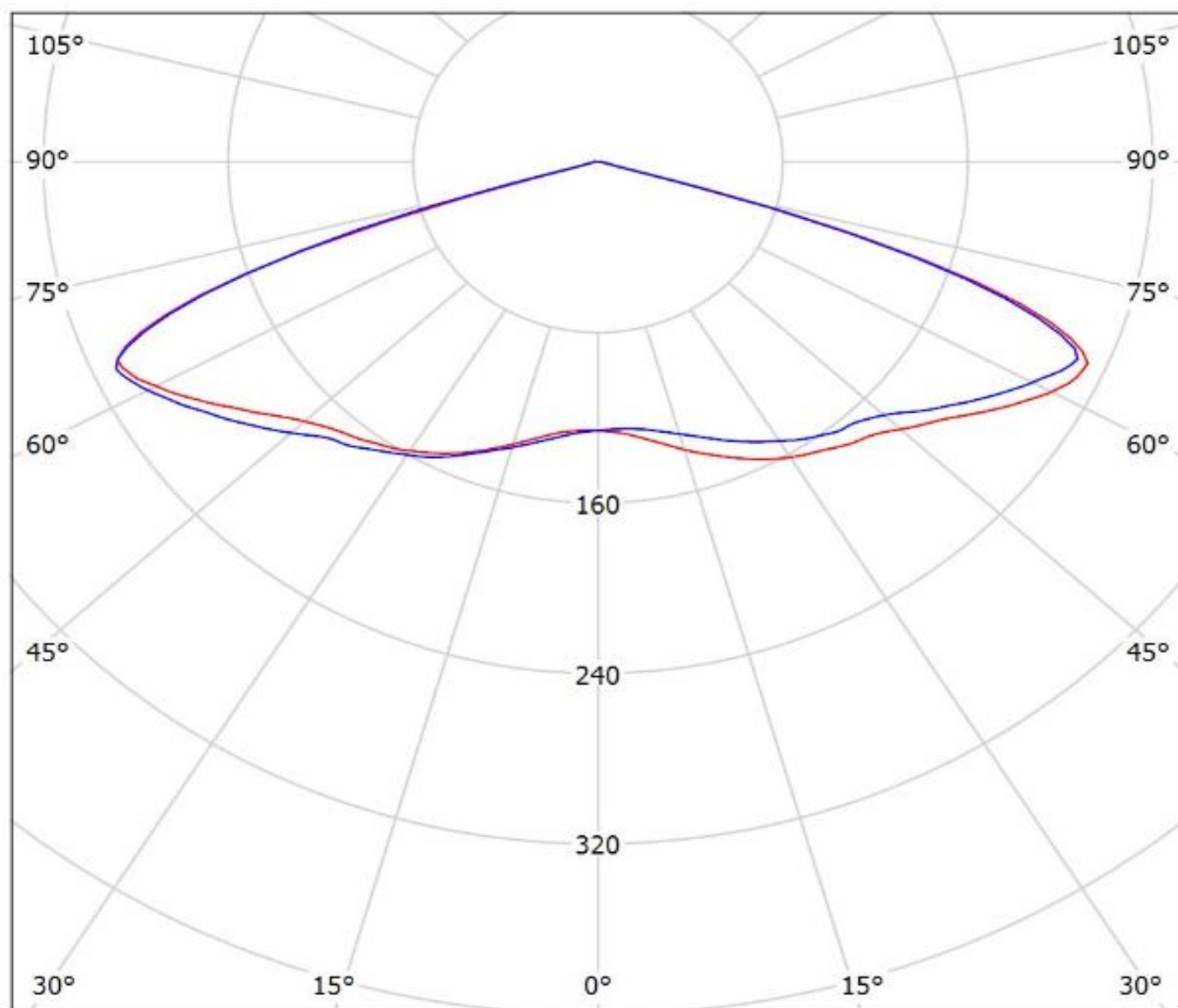
Luminaire: Ledil FN15379\_STELLA-VSM\_(MJT\_30W\_Les14,5)\_+433\_Typ\_Z1

Lamps: 1 x Seoul\_MJT\_30W\_Les14,5mm\_(SAWx1566A)\_433\_Typ\_Z1\_1343.97lm@250mA\_P=8.2295W\_I=0.25A



Luminaire: Ledil FN15379\_STELLA-VSM\_(VERO18)

Lamps: 1 x Bridgelux\_Vero18\_(BXRE-30E4000-F-23)\_1040.57lm@250mA\_P=6.7955W\_I=0.250A

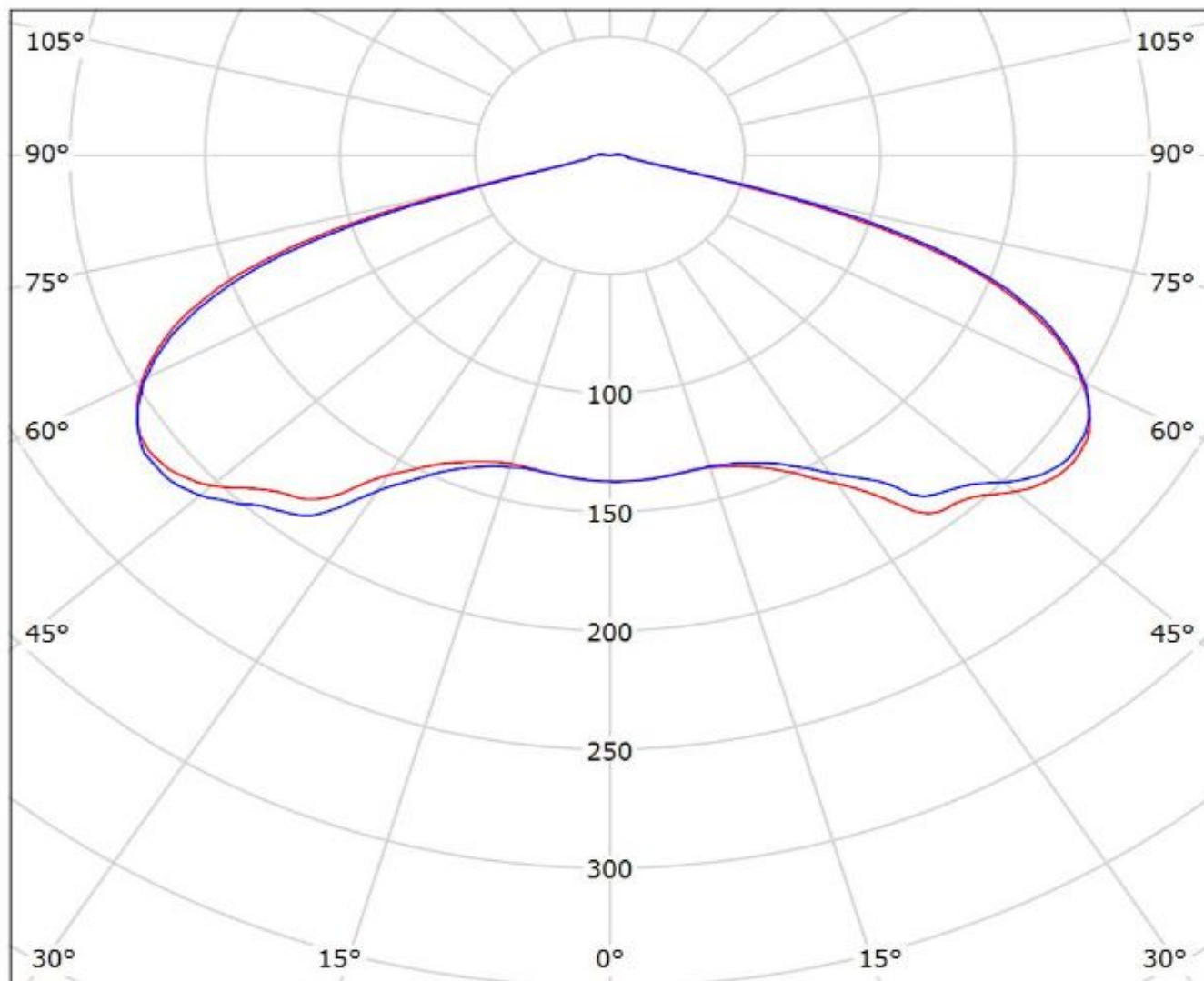


cd/klm

— C0 - C180 — C90 - C270

$\eta = 96\%$

Luminaire: Ledil FN15379\_STELLA-VSM\_(Vero29\_SE\_Gen7)  
Lamps: 1 x Vero29\_SE\_Gen7\_1759.38lm@250mA\_P=8.58975\_I=0.25A



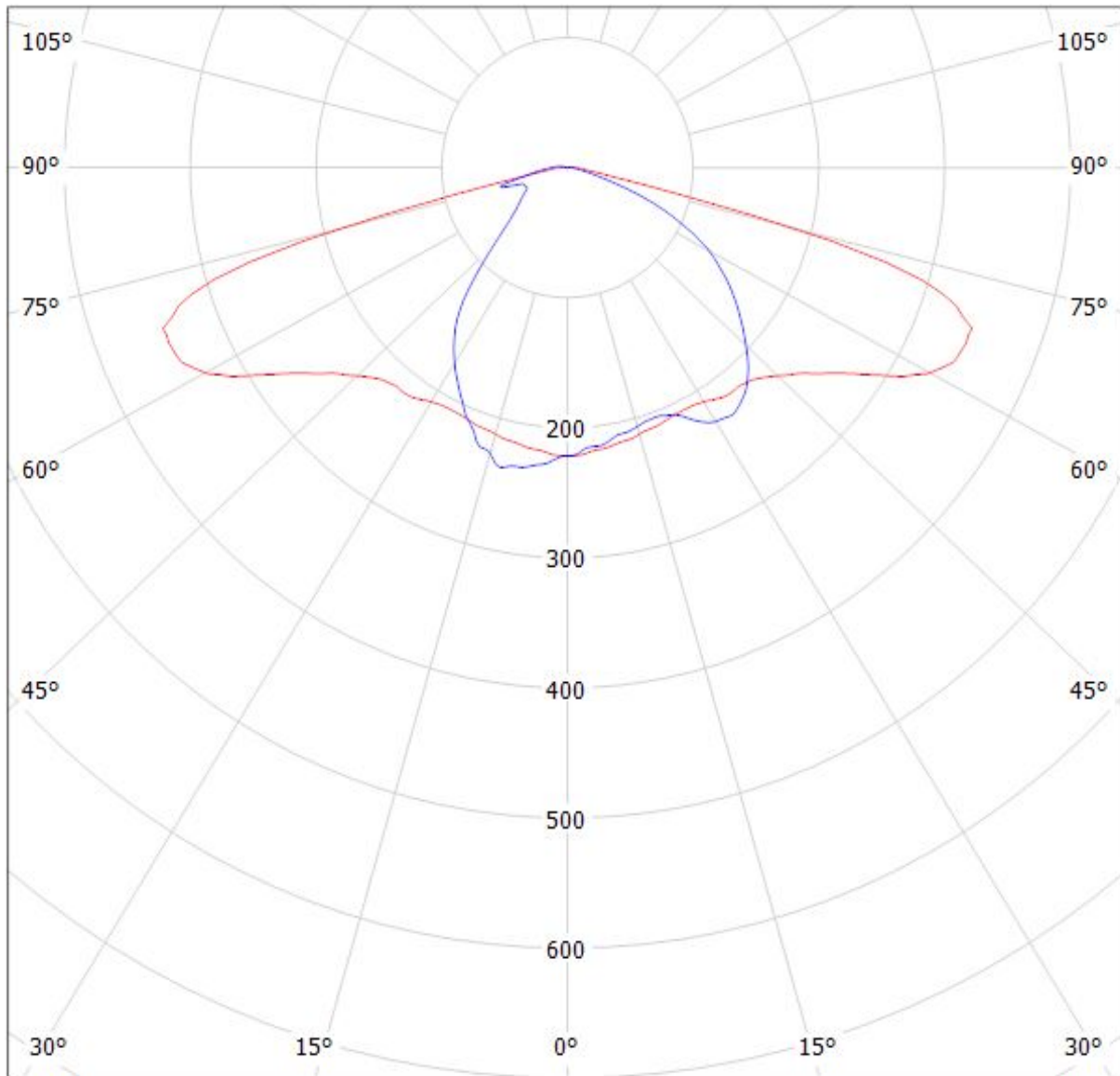
cd/klm  
— C0 - C180 — C90 - C270

$\eta = 96\%$



Luminaire: LEDiL Oy FN14976\_STELLA-DWC2\_(Vero\_13\_SE)

Lamps: 1 x Bridgelux\_Vero\_13\_SE\_(BXRC-30E2000-C-73-SE)\_1028.9lm@250mA\_CCT=3000K\_P=8.23391W\_I=0.25A



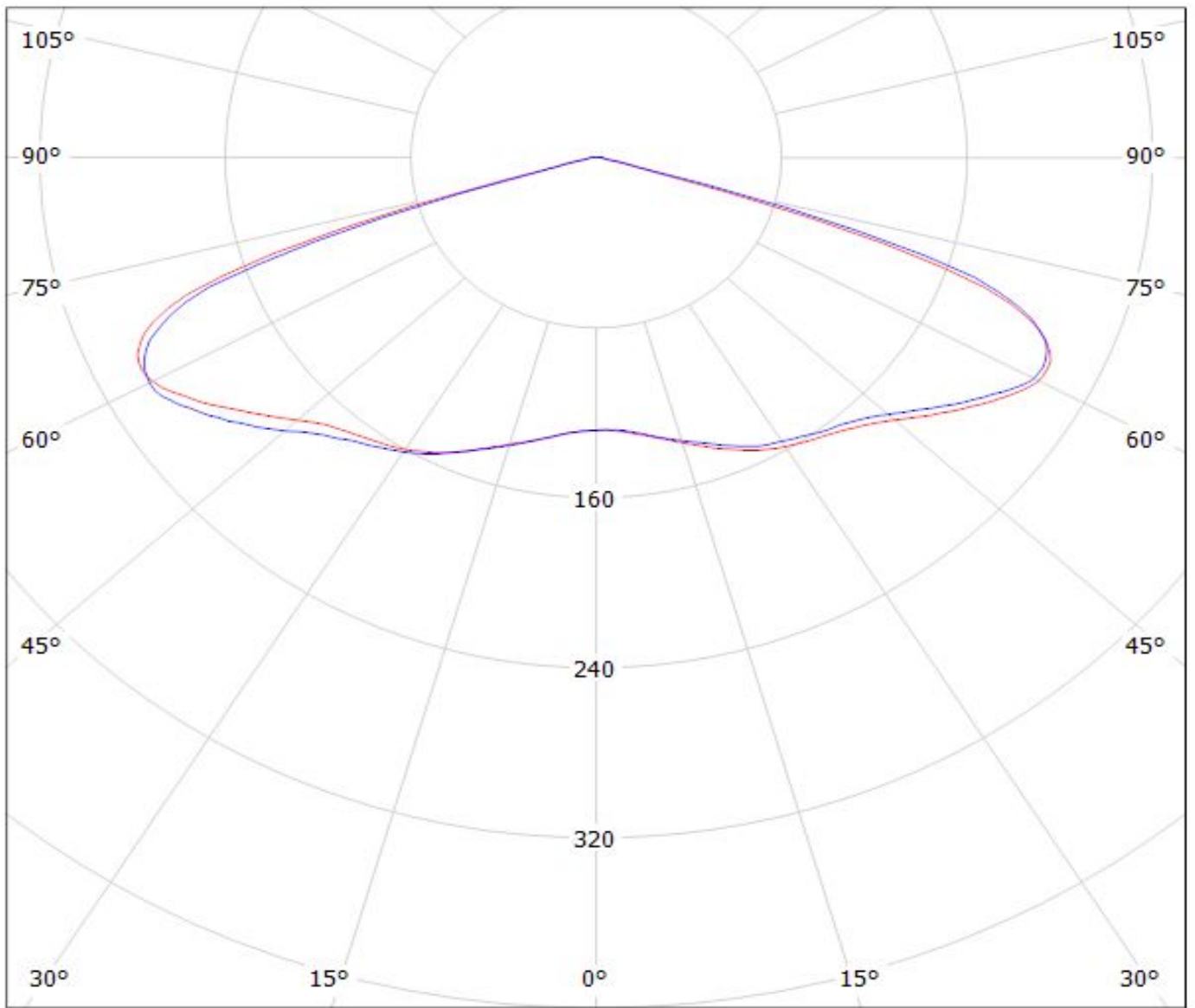
cd/klm

— C0 - C180

— C90 - C270

$\eta = 90\%$

Luminaire: LEDiL Oy FN15379\_STELLA-VSM\_(VERO18\_SE)  
Lamps: 1 x Bridgelux\_VERO18\_SE\_(BXRC-30E4000-C-73-SE)  
\_1335.46lm@250mA\_P=7.9961W\_I=0.25A

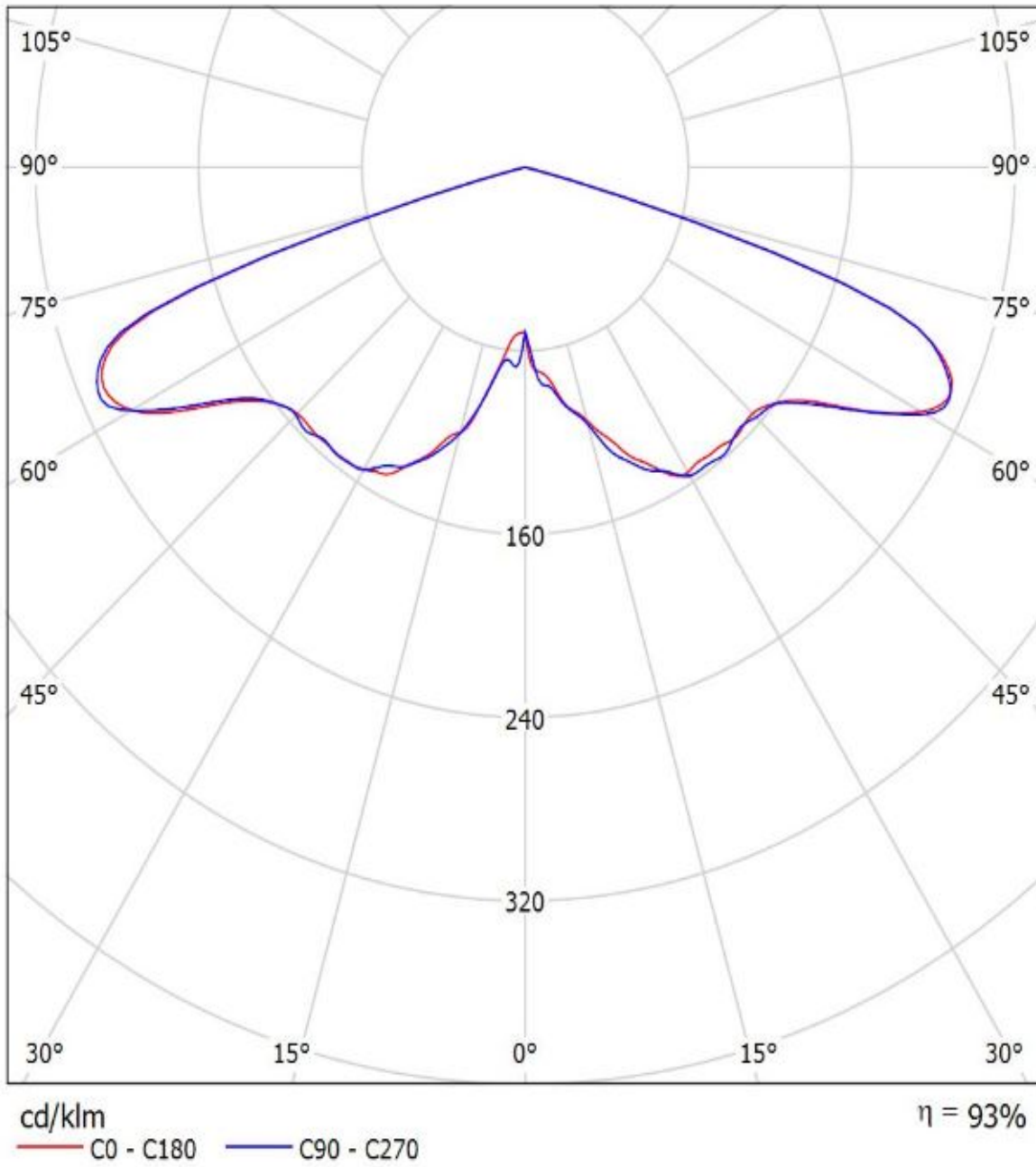


cd/klm

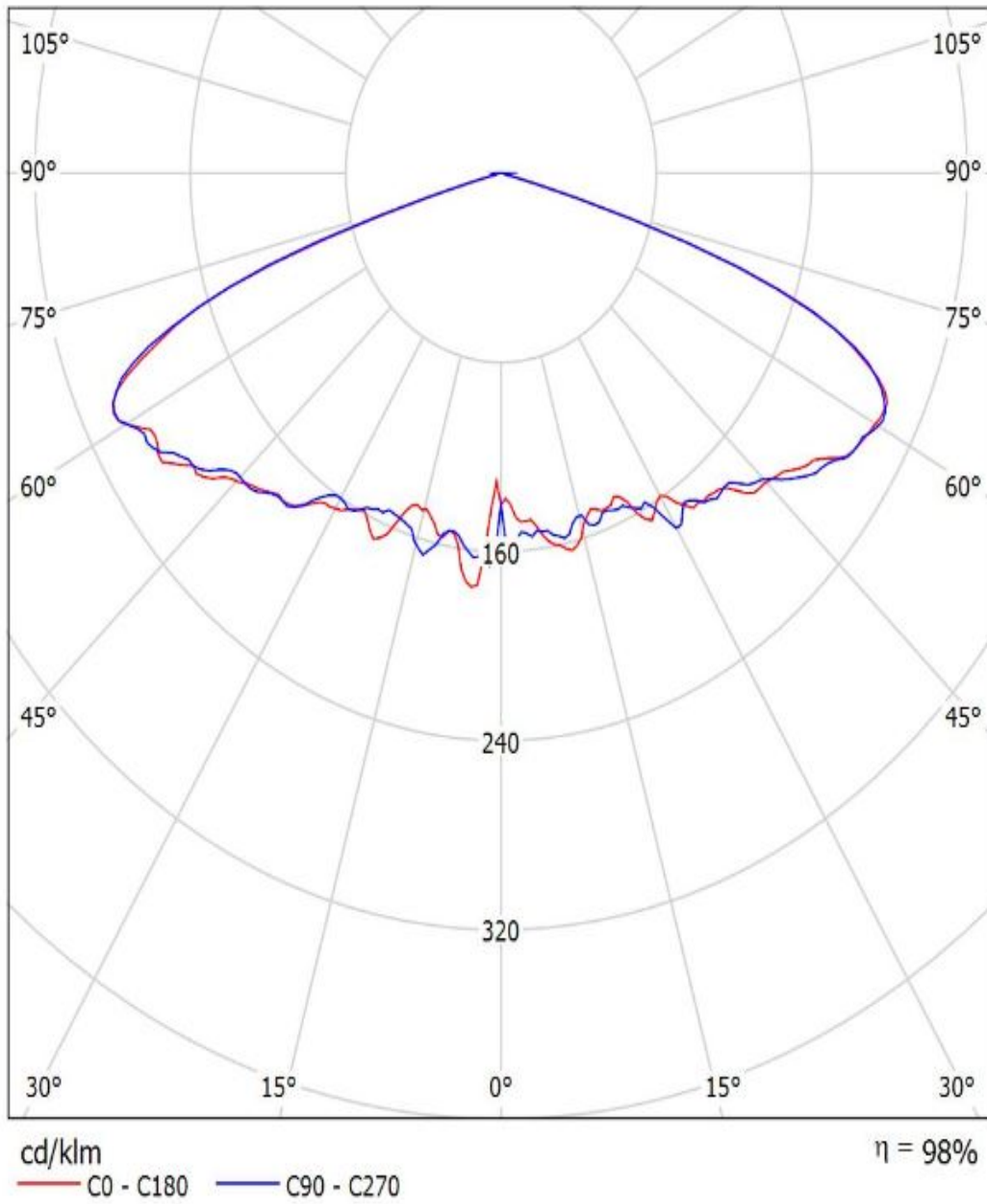
— C0 - C180    — C90 - C270

$\eta = 95\%$

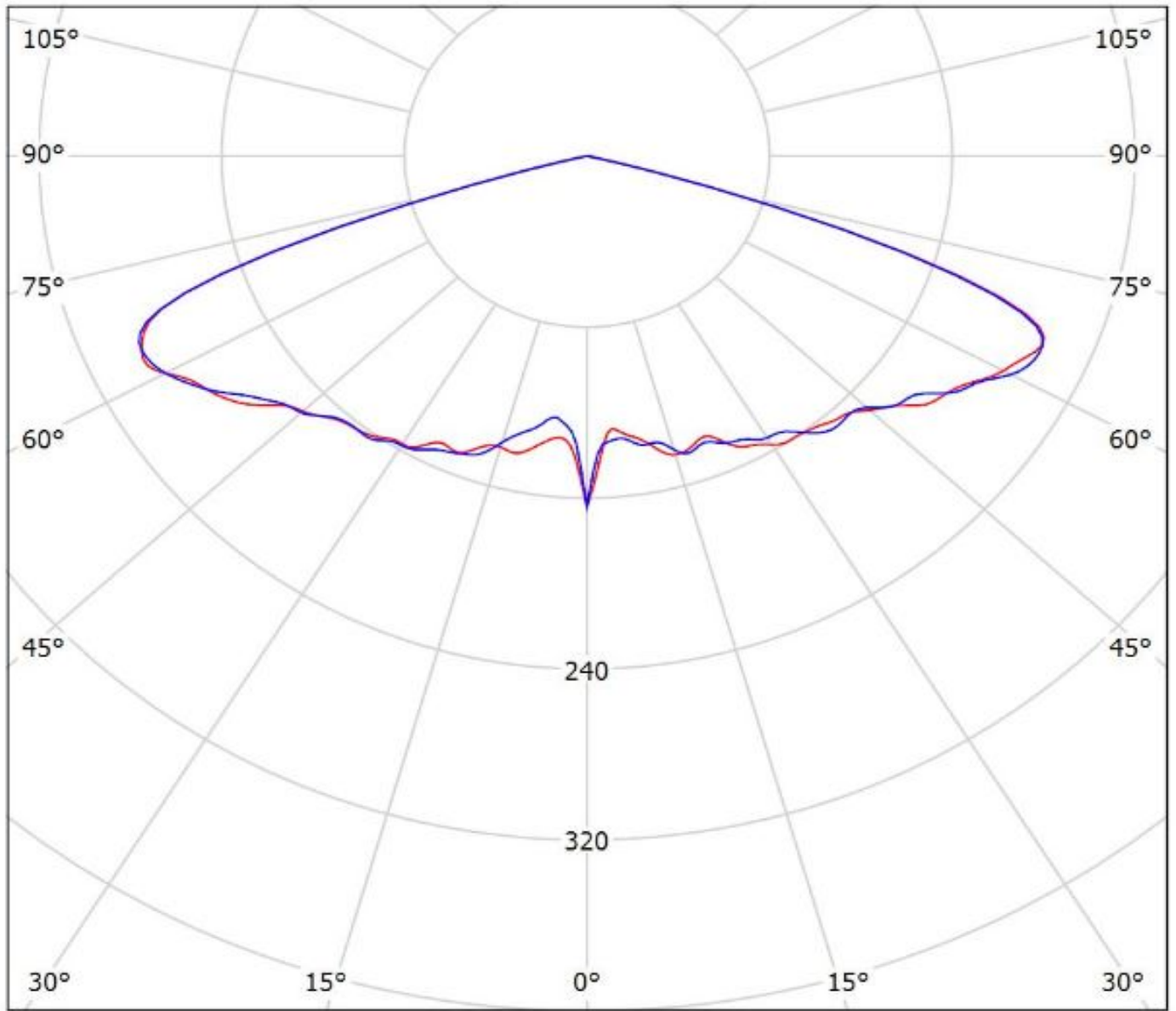
Luminaire: Ledil Oy FN15379\_STELLA-VSM+\_Bender&Wirth - LED holder 434 Typ Z1\_BRIDGELUX\_V10\_Gen7\_SIMULATED  
Lamps: 1 x BRIDGELUX V10 Gen7



Luminaire: Ledil Oy FN15379\_STELLA-VSM\_Bridgelux\_V22\_Gen7\_SIMULATED FN15379\_STELLA-VSM\_Bridgelux\_V22\_Gen7\_SIMULATED  
Lamps: 1 x FN15379\_STELLA-VSM\_Bridgelux\_V22\_Gen7\_SIMULATED



Luminaire: Ledil Oy FN15379\_STELLA-VSM\_BRIDGELUX\_V18\_Gen7\_SIMULATED  
Lamps: 1 x BRIDGELUX V18 Gen7

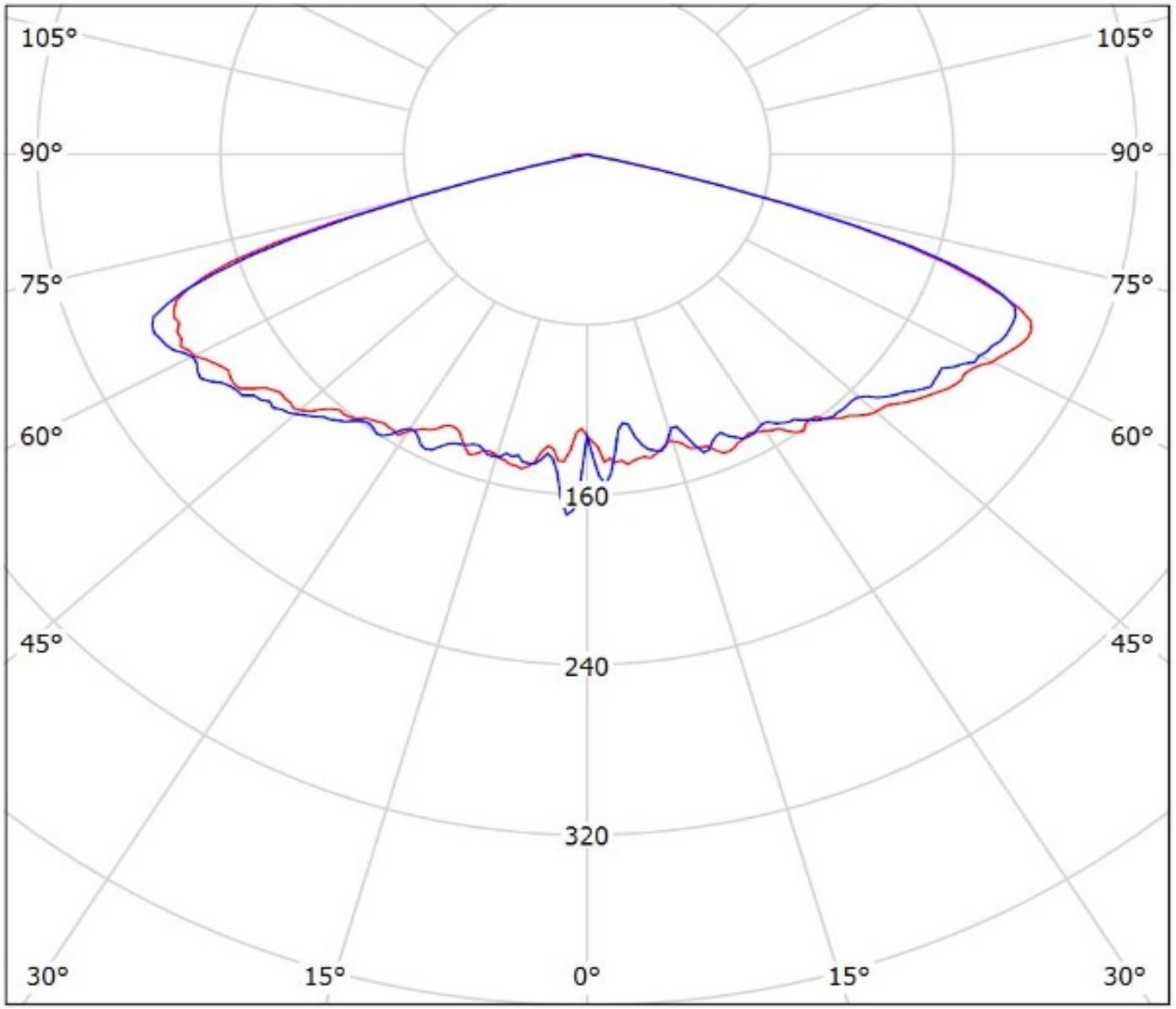


cd/klm

— C0 - C180 — C90 - C270

$\eta = 93\%$

Luminaire: Ledil Oy FN15379\_STELLA-VSM\_simulated\_CLU044  
Lamps: 1 x Citizen CLU044



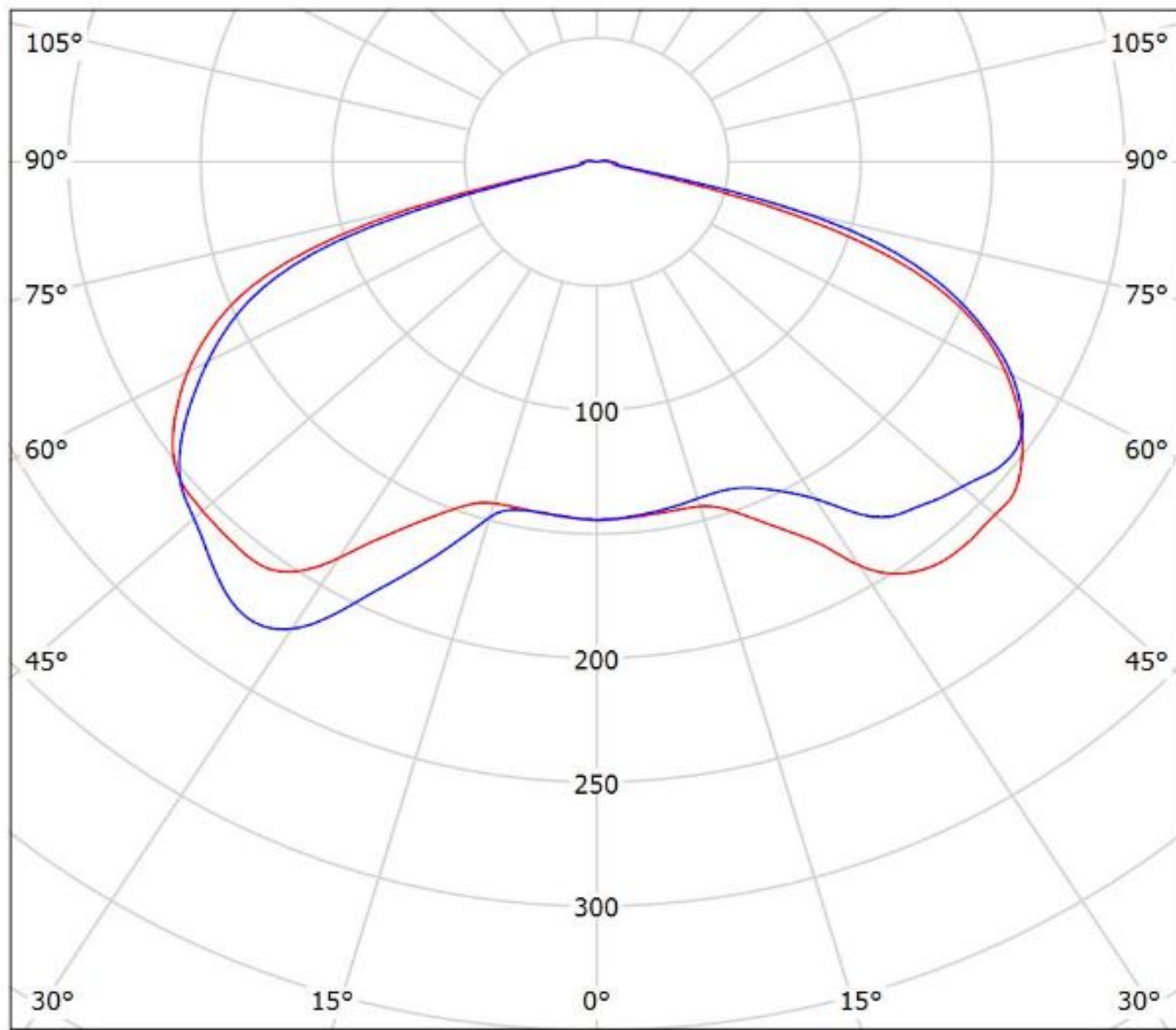
cd/klm  
— C0 - C180 — C90 - C270

$\eta = 93\%$



Luminaire: Ledil FN15379\_STELLA-VSM\_(CLU054)

Lamps: 1 x Citizen\_CLU054\_(CLU054-1825B8-503MIA2)\_1939.14lm@250mA\_P=11.752W\_I=0.25A



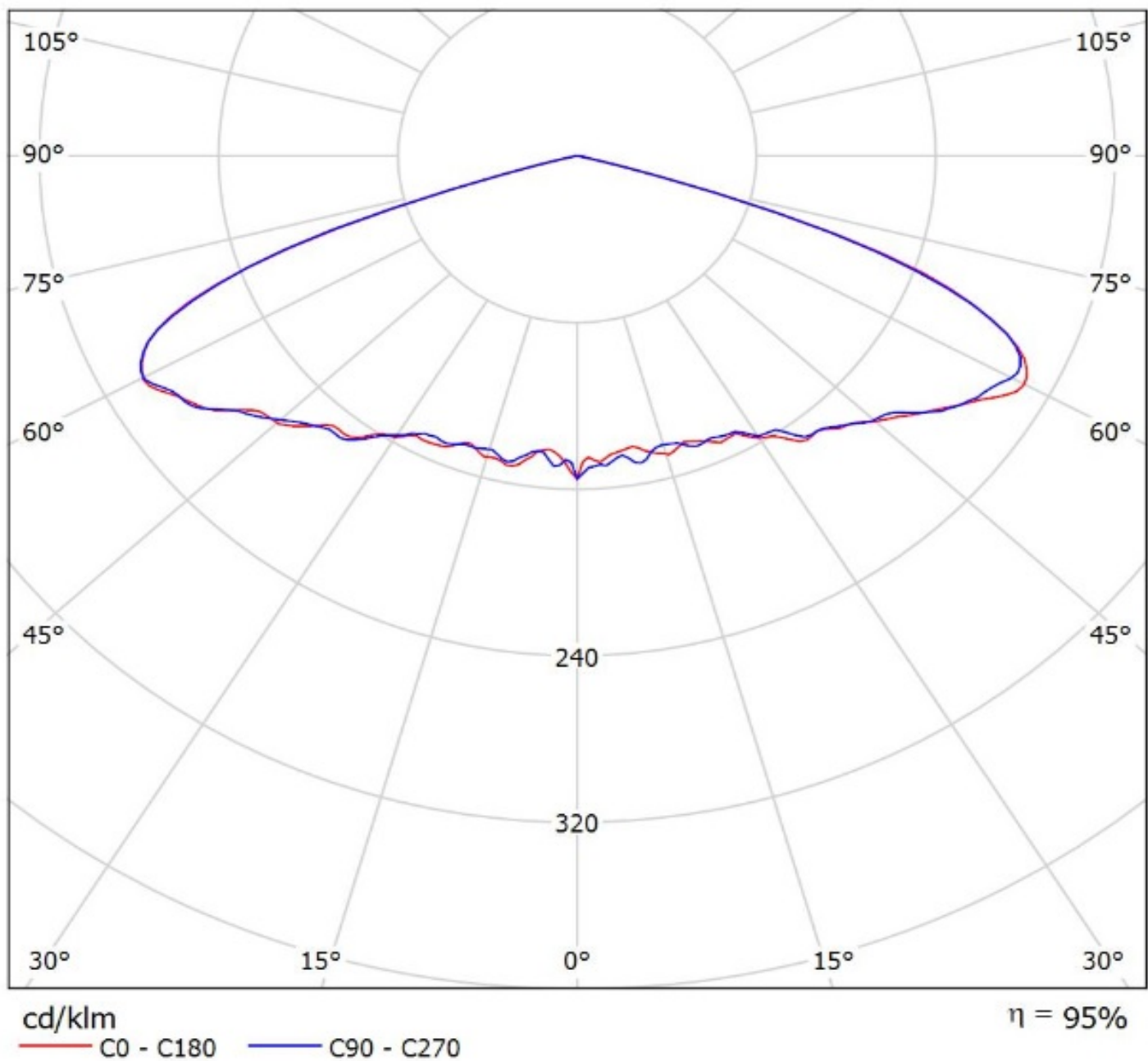
cd/klm

— C0 - C180 — C90 - C270

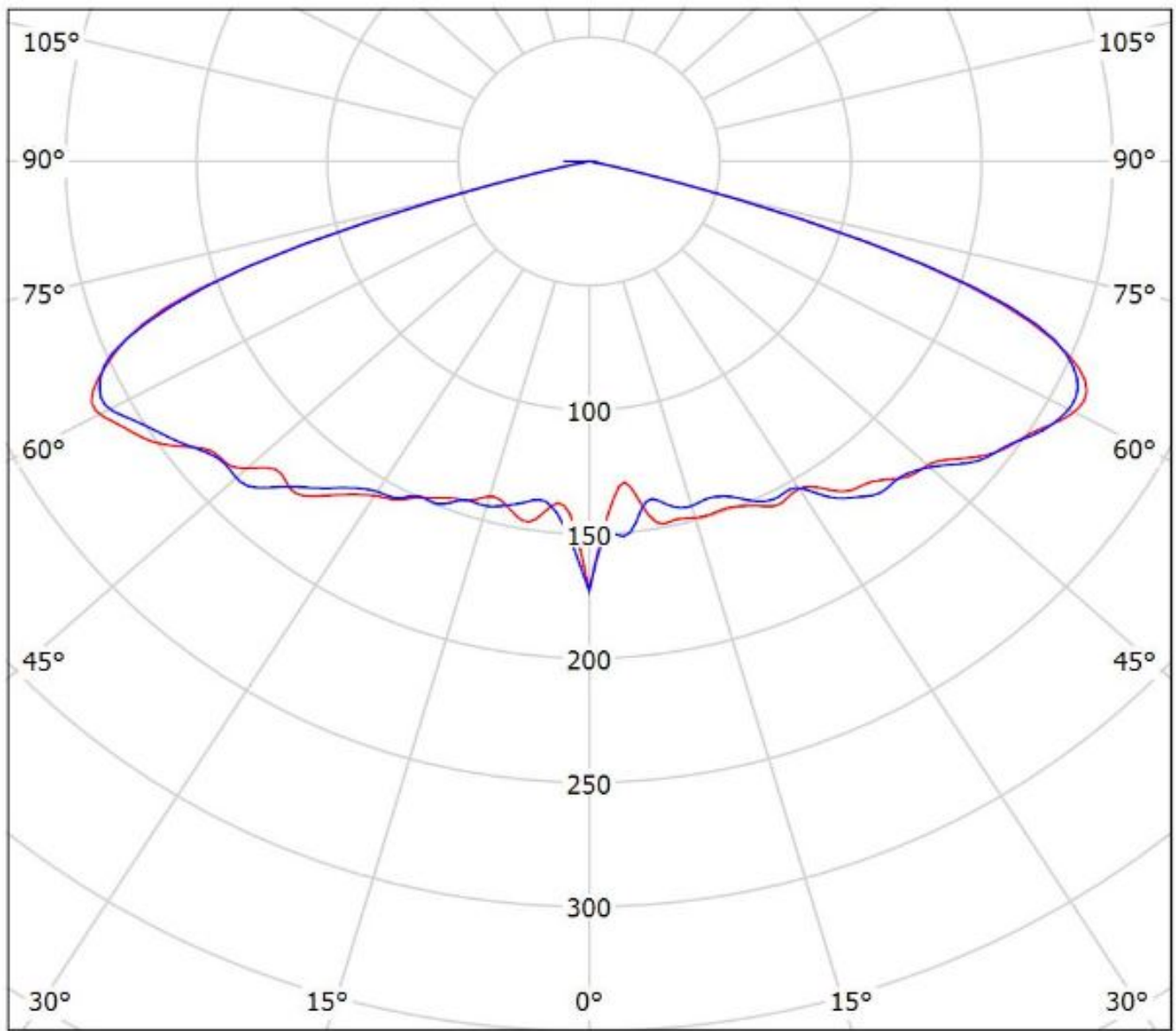
$\eta = 95\%$



Luminaire: Ledil Oy FN15379\_STELLA-VSM\_(CLU048)\_(B&W\_431\_Type\_Z1)\_SIMULATED  
Lamps: 1 x Citizen CLU048 + Bender & Wirth 431 Type Z1



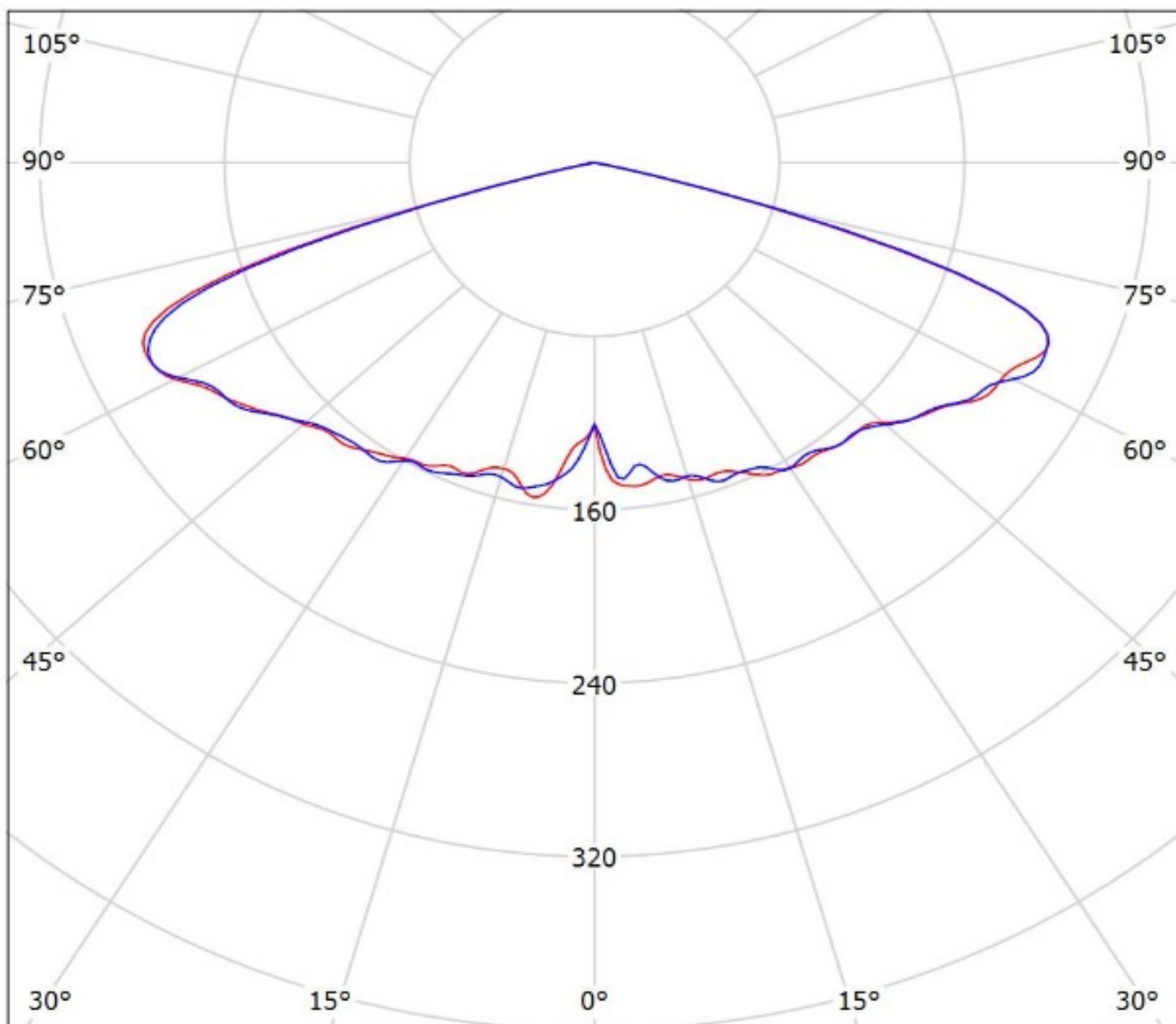
Luminaire: Ledil Oy FN15379\_STELLA-VSM+\_Bender+Wirth 447 Typ Z1\_CREE\_CXB3070\_SIMULATED  
Lamps: 1 x CREE CXB3070



cd/klm  
— C0 - C180 — C90 - C270

$\eta = 94\%$

Luminaire: Ledil Oy FN15379\_STELLA-VSM\_(CXB2540)\_SIMULATED  
Lamps: 1 x Cree CXB 2540



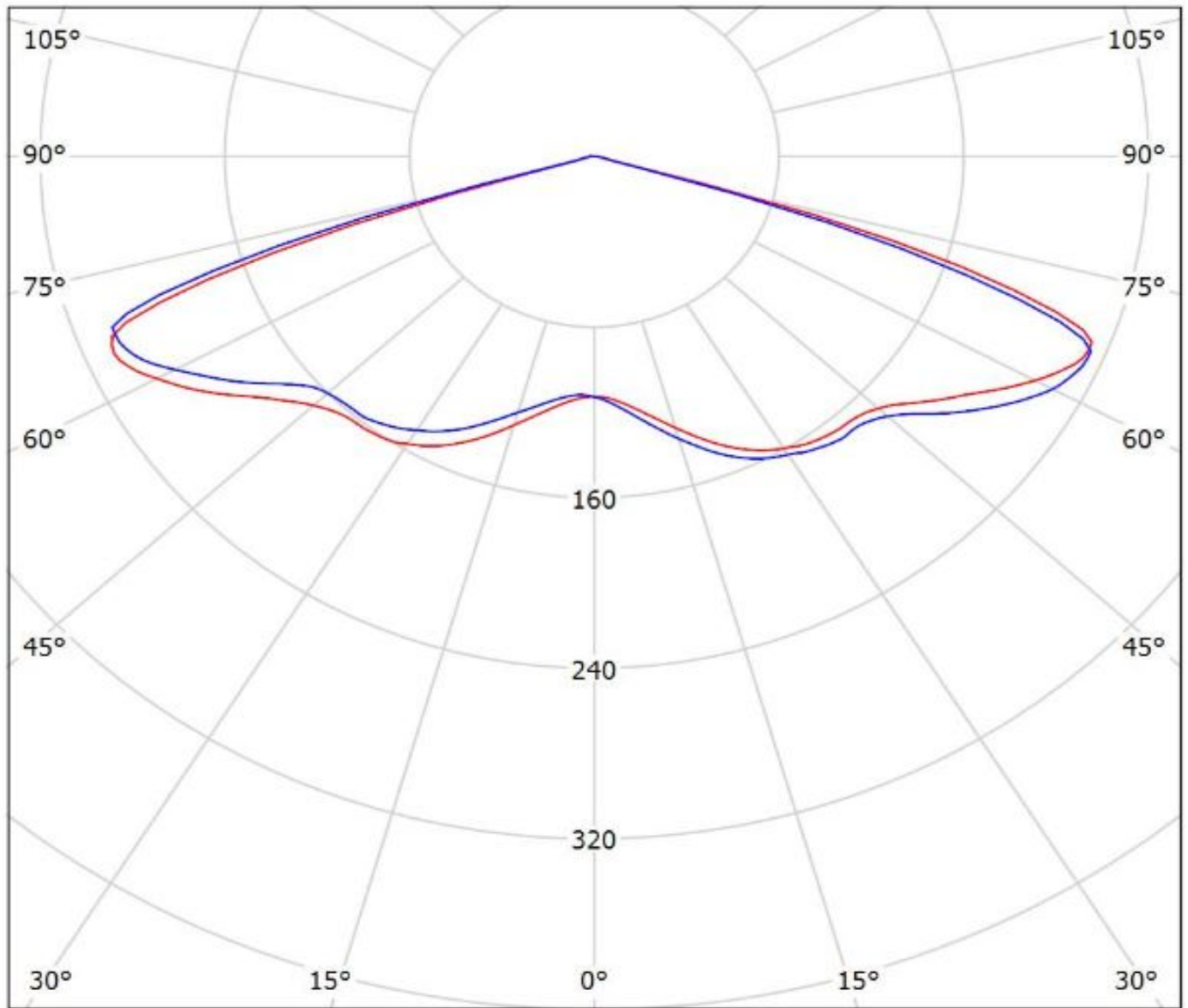
cd/klm

— C0 - C180    — C90 - C270

$\eta = 96\%$

Luminaire: Ledil FN15379\_STELLA-VSM\_(Luxeon\_1208)

Lamps: 1 x Lumileds\_Luxeon\_1208\_(LHC1-3080-1208)\_1076.07lm250mA\_P=8.2273W\_I=0.250A



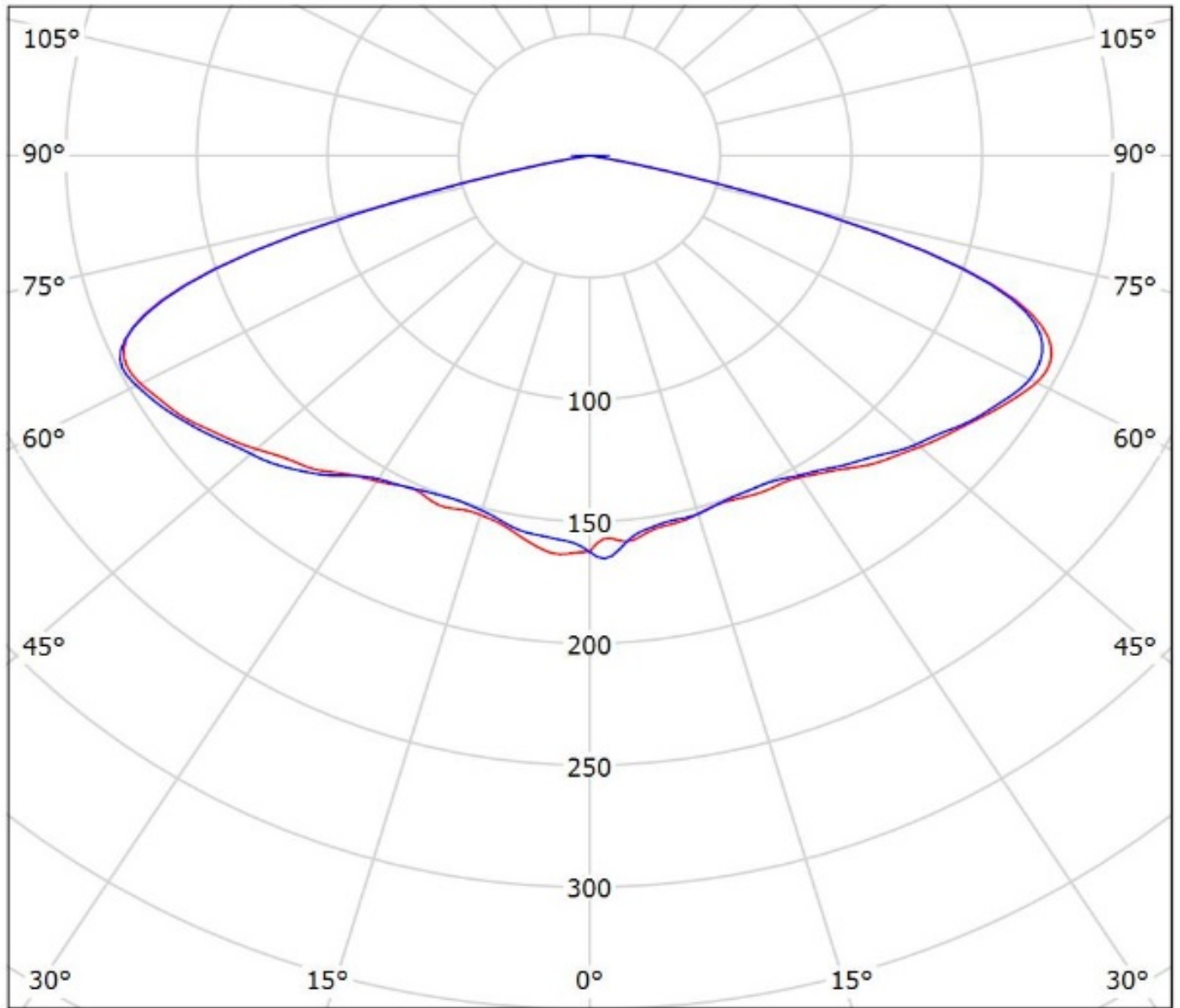
cd/klm

— C0 - C180

— C90 - C270

$\eta = 96\%$

Luminaire: Ledil Oy FN15379\_STELLA-VSM\_(Luxeon\_CoB\_1216)\_(431\_Typ\_Z1)\_SIMULATED  
Lamps: 1 x Lumileds Luxeon CoB 1216 + Bender & Wirth 431 Type Z1

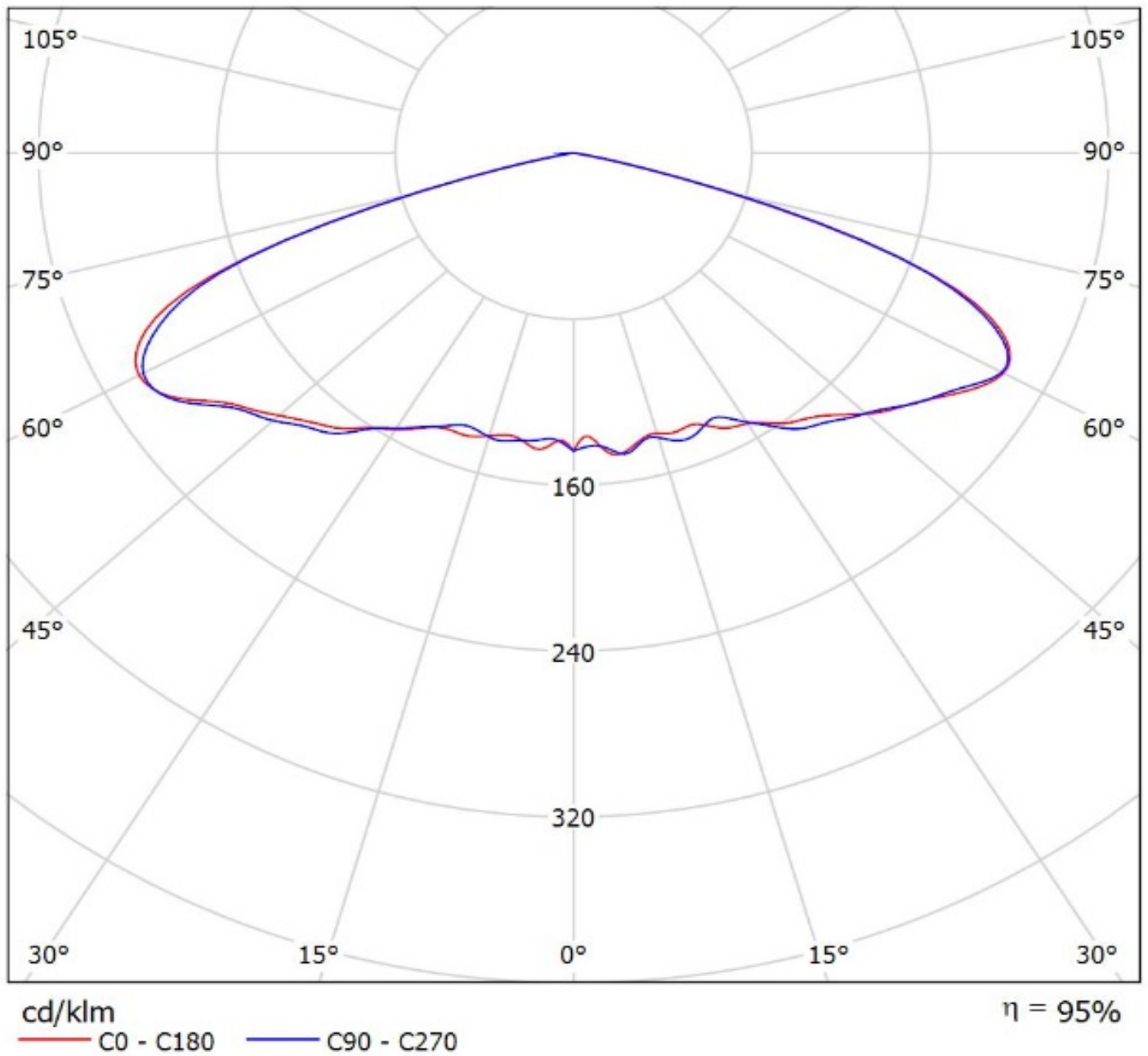


cd/klm

— C0 - C180 — C90 - C270

$\eta = 92\%$

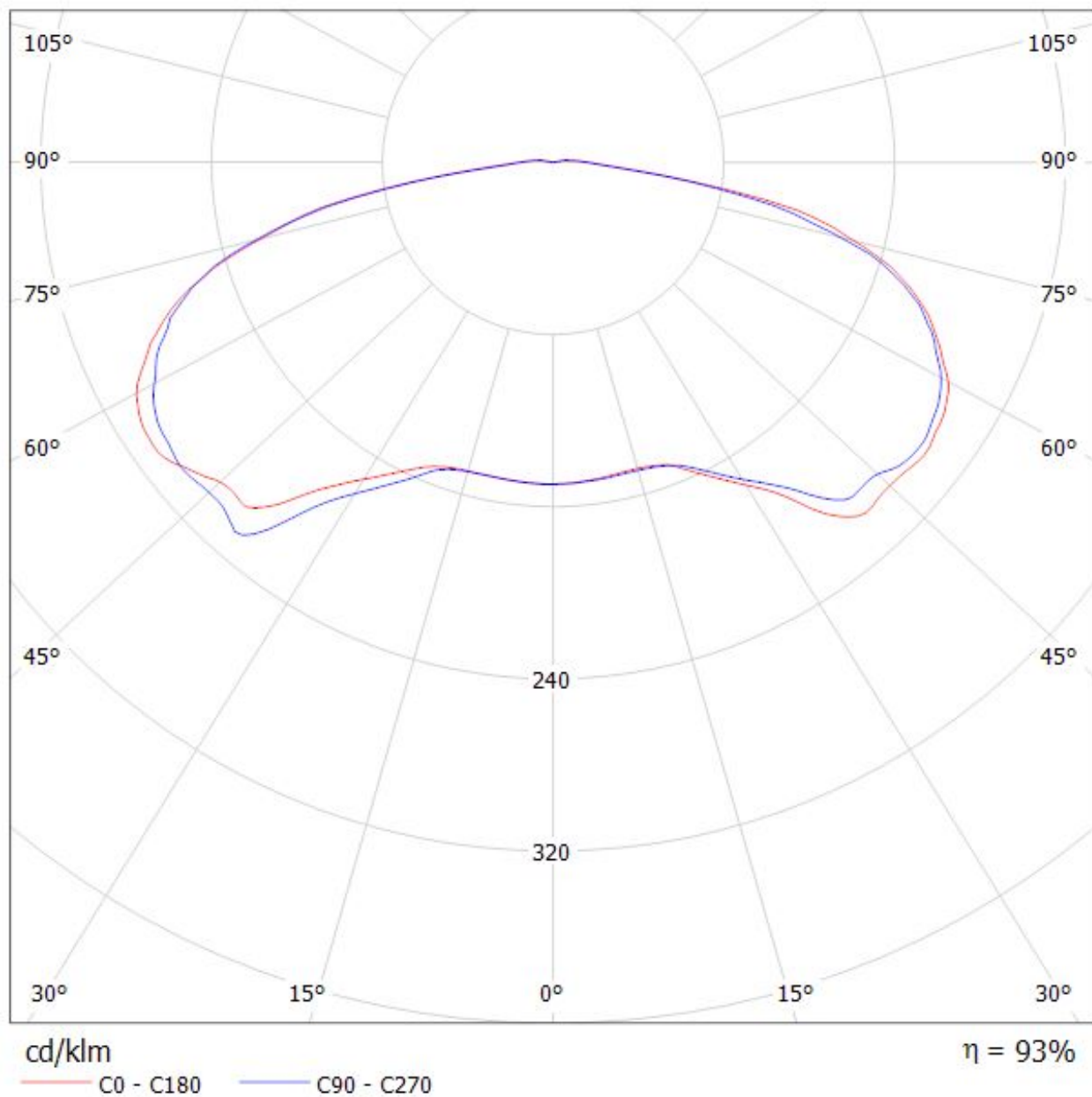
Luminaire: Ledil Oy FN15379\_STELLA-VSM\_(CXM-22)\_(B&W\_431\_Type\_Z1)\_SIMULATED  
Lamps: 1 x Luminus CXM-22 + Bender & Wirth 431 Type Z1





Luminaire: Ledil FN15379\_STELLA-VSM\_(MJT\_180W\_Les32,8)

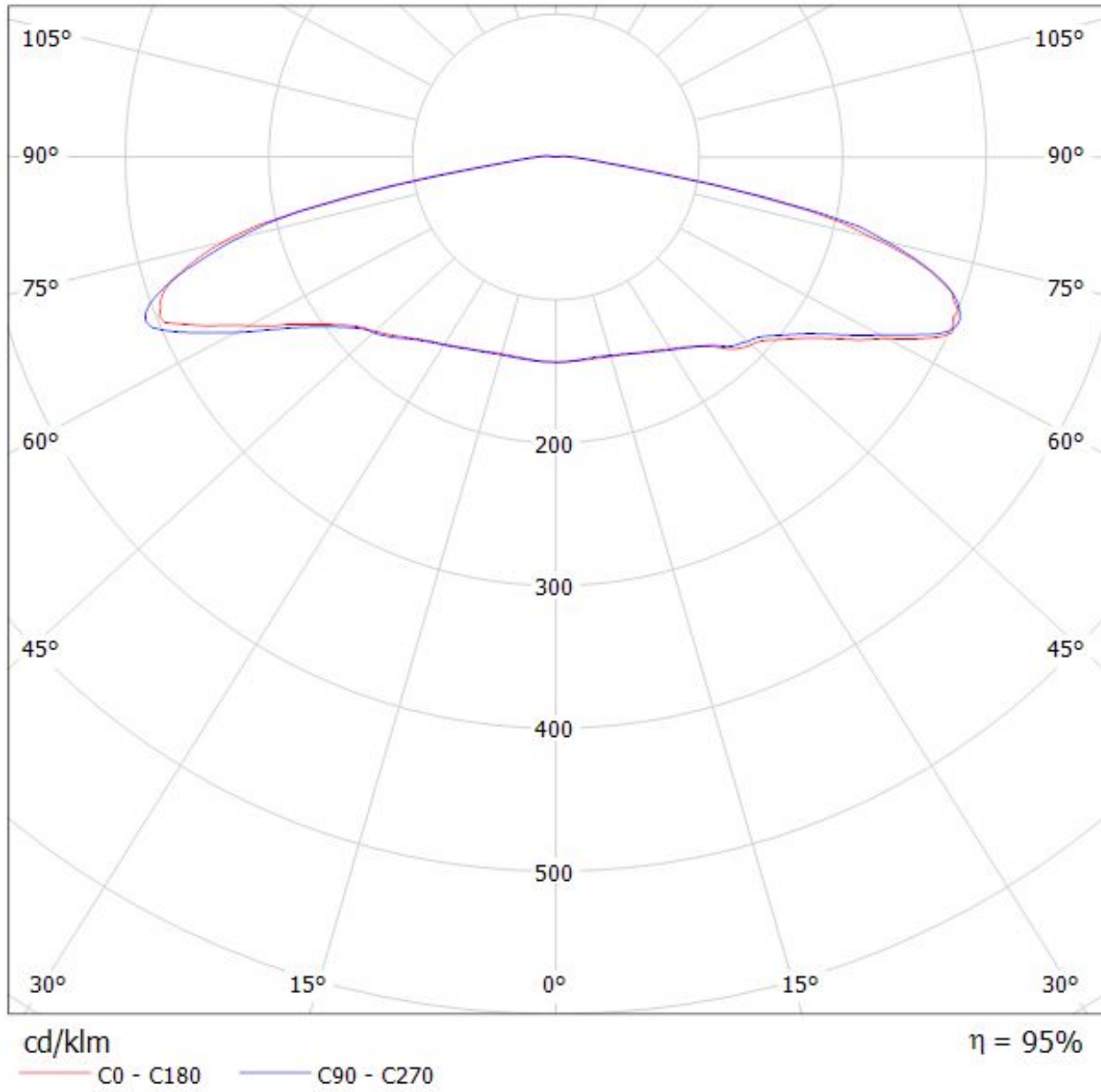
Lamps: 1 x Seoul\_MJT\_180W\_Les33,8mm\_(SAWx33GCA)\_3860.39lm@250mA\_P=21.1143W\_I=0.25A





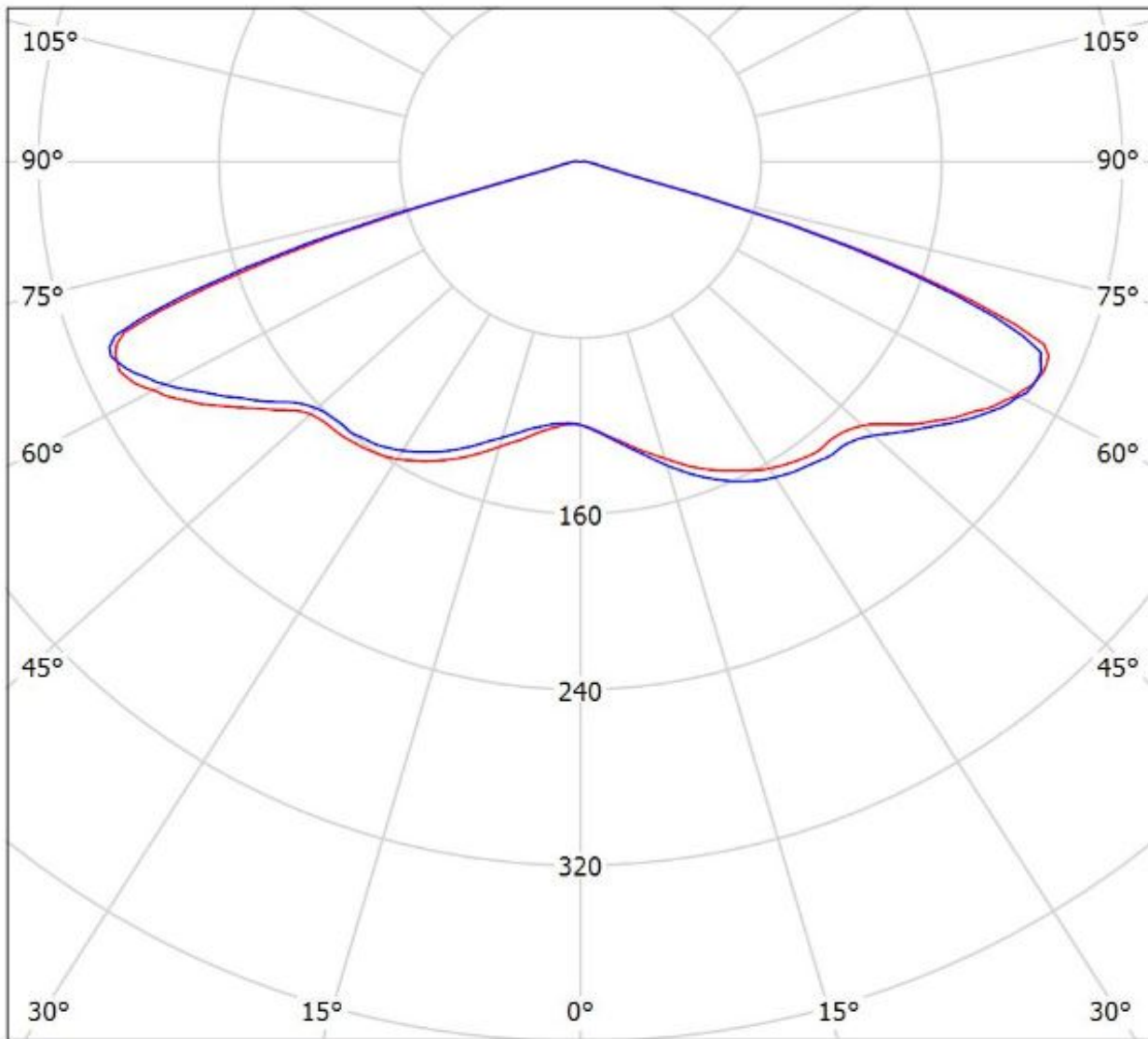
Luminaire: Ledil FN15379\_STELLA-VSM\_(MJT\_80W\_Les22)\_+431TypZ1

Lamps: 1 x Seoul\_MJT\_80W\_Les22mm\_(SAWx22AAA)\_+431TypZ1\_2508.93lm@250mA\_P=13.323W\_I=0.25A



Luminaire: Ledil FN15379\_STELLA-VSM\_(MJT\_30W\_Les14,5)\_+433\_Typ\_Z1

Lamps: 1 x Seoul\_MJT\_30W\_Les14,5mm\_(SAWx1566A)\_433\_Typ\_Z1\_1343.97lm@250mA\_P=8.2295W\_I=0.25A



cd/klm

— C0 - C180 — C90 - C270

$\eta = 95\%$

**NOTE: The typical divergence will be changed by different color, chip size and chip position tolerance. The typical total divergence is the full angle measured where the luminous intensity is half of the peak value.**

### **GENERAL INFORMATION**

- Product series especially designed & optimized for series of LEDs.
- Special care taken to make light distribution as uniform as possible.

Note! Due to use of high power COB's with this product, special attention to proper thermal design is highly recommended. LEDiL has no liability for direct, indirect or consecutive damages arising from the LEDiL products being used outside of the recommended temperature range.